



# Cyclin C rabbit pAb

Cat No.:ES7910

For research use only

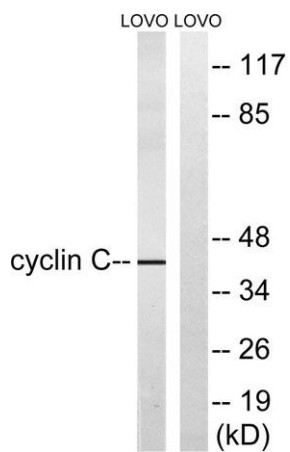
## Overview

<b>Product Name</b>	Cyclin C rabbit pAb
<b>Host species</b>	Rabbit
<b>Applications</b>	WB;ELISA
<b>Species Cross-Reactivity</b>	Human;Mouse;Rat
<b>Recommended dilutions</b>	Western Blot: 1/500 - 1/2000. ELISA: 1/5000. Not yet tested in other applications.
<b>Immunogen</b>	The antiserum was produced against synthesized peptide derived from human Cyclin C. AA range:234-283
<b>Specificity</b>	Cyclin C Polyclonal Antibody detects endogenous levels of Cyclin C protein.
<b>Formulation</b>	Liquid in PBS containing 50% glycerol, 0.5% BSA and 0.02% sodium azide.
<b>Storage</b>	Store at -20°C. Avoid repeated freeze-thaw cycles.
<b>Protein Name</b>	Cyclin-C
<b>Gene Name</b>	CCNC
<b>Cellular localization</b>	Nucleus .
<b>Purification</b>	The antibody was affinity-purified from rabbit antiserum by affinity-chromatography using epitope-specific immunogen.
<b>Clonality</b>	Polyclonal
<b>Concentration</b>	1 mg/ml
<b>Observed band</b>	33-37kD
<b>Human Gene ID</b>	892
<b>Human Swiss-Prot Number</b>	P24863
<b>Alternative Names</b>	CCNC; Cyclin-C; SRB11 homolog; hSRB11
<b>Background</b>	The protein encoded by this gene is a member of the cyclin family of proteins. The encoded protein interacts with cyclin-dependent kinase 8 and induces the phosphorylation of the carboxy-terminal domain of the large subunit of RNA polymerase II. The level of mRNAs for this gene peaks in the G1 phase of the cell cycle. Two transcript variants





encoding different isoforms have been found for this gene. [provided by RefSeq, Jul 2008],



Western blot analysis of lysates from LOVO cells, using Cyclin C Antibody. The lane on the right is blocked with the synthesized peptide.

