



Cyclin B1 rabbit pAb

Cat No.:ES7907

For research use only

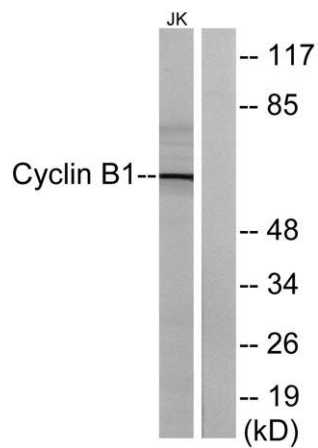
Overview

Product Name	Cyclin B1 rabbit pAb
Host species	Rabbit
Applications	WB;IHC;IF
Species Cross-Reactivity	Human;Mouse;Rat
Recommended dilutions	WB: 1:500-1:2000 IHC: 1:50-1:200
Immunogen	The antiserum was produced against synthesized peptide derived from human Cyclin B1. AA range:121-170
Specificity	Cyclin B1 Polyclonal Antibody detects endogenous levels of Cyclin B1 protein.
Formulation	Liquid in PBS containing 50% glycerol, 0.5% BSA and 0.02% sodium azide.
Storage	Store at -20°C. Avoid repeated freeze-thaw cycles.
Protein Name	G2/mitotic-specific cyclin-B1
Gene Name	CCNB1
Cellular localization	Cytoplasm. Nucleus. Cytoplasm, cytoskeleton, microtubule organizing center, centrosome.
Purification	The antibody was affinity-purified from rabbit antiserum by affinity-chromatography using epitope-specific immunogen.
Clonality	Polyclonal
Concentration	1 mg/ml
Observed band	65kD
Human Gene ID	891
Human Swiss-Prot Number	P14635
Alternative Names	CCNB1; CCNB; G2/mitotic-specific cyclin-B1
Background	The protein encoded by this gene is a regulatory protein involved in mitosis. The gene product complexes with p34(cdc2) to form the maturation-promoting factor (MPF). Two alternative transcripts have been found, a constitutively expressed transcript and a cell cycle-regulated transcript, that is expressed predominantly during





G2/M phase. The different transcripts result from the use of alternate transcription initiation sites. [provided by RefSeq, Jul 2008],



Western blot analysis of lysates from Jurkat cells, treated with UV 15', using Cyclin B1 Antibody. The lane on the right is blocked with the synthesized peptide.

