



PIX β rabbit pAb

Cat No.:ES7898

For research use only

Overview

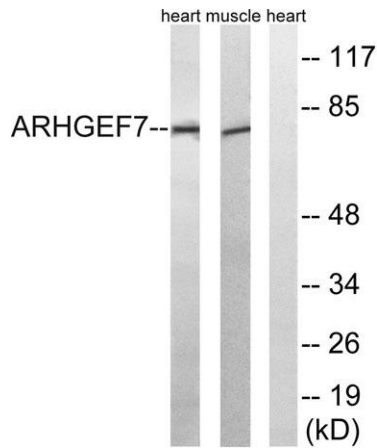
Product Name	PIX β rabbit pAb
Host species	Rabbit
Applications	WB;IHC;IF;ELISA
Species Cross-Reactivity	Human;Mouse;Rat
Recommended dilutions	Western Blot: 1/500 - 1/2000. Immunohistochemistry: 1/100 - 1/300. ELISA: 1/5000. Not yet tested in other applications.
Immunogen	The antiserum was produced against synthesized peptide derived from human ARHGEF7. AA range:311-360
Specificity	PIX β Polyclonal Antibody detects endogenous levels of PIX β protein.
Formulation	Liquid in PBS containing 50% glycerol, 0.5% BSA and 0.02% sodium azide.
Storage	Store at -20°C. Avoid repeated freeze-thaw cycles.
Protein Name	Rho guanine nucleotide exchange factor 7
Gene Name	ARHGEF7
Cellular localization	Cell junction, focal adhesion . Cell projection, ruffle . Cytoplasm, cell cortex . Cell projection, lamellipodium . Detected at cell adhesions. A small proportion is detected at focal adhesions.
Purification	The antibody was affinity-purified from rabbit antiserum by affinity-chromatography using epitope-specific immunogen.
Clonality	Polyclonal
Concentration	1 mg/ml
Observed band	80kD
Human Gene ID	8874
Human Swiss-Prot Number	Q14155
Alternative Names	ARHGEF7; COOL1; KIAA0142; P85SPR; PAK3BP; PIXB; Nbla10314; Rho guanine nucleotide exchange factor 7; Beta-Pix; COOL-1; PAK-interacting exchange factor beta; p85



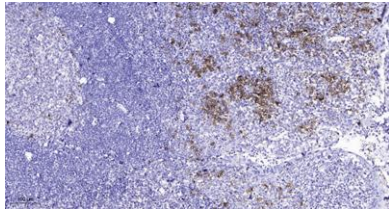


Background

This gene encodes a protein that belongs to a family of cytoplasmic proteins that activate the Ras-like family of Rho proteins by exchanging bound GDP for GTP. It forms a complex with the small GTP binding protein Rac1 and recruits Rac1 to membrane ruffles and to focal adhesions. Multiple alternatively spliced transcript variants encoding different isoforms have been observed for this gene. [provided by RefSeq, Mar 2016],



Western blot analysis of lysates from rat muscle and rat heart cells, using ARHGEF7 Antibody. The lane on the right is blocked with the synthesized peptide.



Immunohistochemical analysis of paraffin-embedded human tonsil. 1, Antibody was diluted at 1:200(4° overnight). 2, Tris-EDTA,pH9.0 was used for antigen retrieval. 3,Secondary antibody was diluted at 1:200(room temperature, 45min).

