



Keratin 37/38 rabbit pAb

Cat No.:ES7859

For research use only

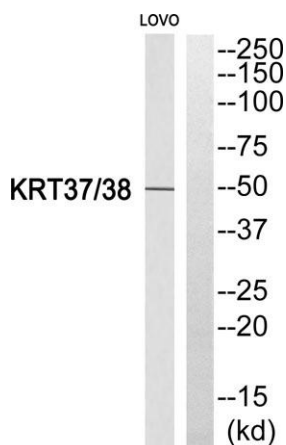
Overview

Product Name	Keratin 37/38 rabbit pAb
Host species	Rabbit
Applications	WB;ELISA;IHC
Species Cross-Reactivity	Human;Rat;Mouse;
Recommended dilutions	WB 1:500-2000;IHC-p 1:50-300; ELISA 2000-20000
Immunogen	The antiserum was produced against synthesized peptide derived from human KRT37/38. AA range:201-250
Specificity	Keratin 37/38 Polyclonal Antibody detects endogenous levels of Keratin 37/38 protein.
Formulation	Liquid in PBS containing 50% glycerol, 0.5% BSA and 0.02% sodium azide.
Storage	Store at -20°C. Avoid repeated freeze-thaw cycles.
Protein Name	Keratin type I cuticular Ha7/Keratin type I cuticular Ha8
Gene Name	KRT37/KRT38
Cellular localization	intermediate filament,extracellular exosome,
Purification	The antibody was affinity-purified from rabbit antiserum by affinity-chromatography using epitope-specific immunogen.
Clonality	Polyclonal
Concentration	1 mg/ml
Observed band	50kD
Human Gene ID	8688
Human Swiss-Prot Number	O76014/O76015
Alternative Names	KRT37; HHA7; HKA7; KRTHA7; Keratin; type I cuticular Ha7; Hair keratin, type I Ha7; Keratin-37; K37; KRT38; HHA8; HKA8; KRTHA8; Keratin, type I cuticular Ha8; Hair keratin, type I Ha8; Keratin-38; K38
Background	The protein encoded by this gene is a member of the keratin gene family. As a type I hair keratin, it is an acidic protein which heterodimerizes with type II

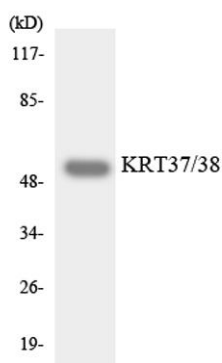




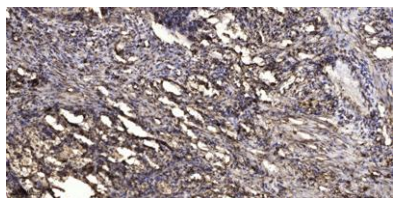
keratins to form hair and nails. The type I hair keratins are clustered in a region of chromosome 17q12-q21 and have the same direction of transcription. [provided by RefSeq, Jul 2008],



Western blot analysis of KRT37/38 Antibody. The lane on the right is blocked with the KRT37/38 peptide.



Western blot analysis of the lysates from HepG2 cells using KRT37/38 antibody.



Immunohistochemical analysis of paraffin-embedded human Squamous cell carcinoma of lung. 1, Antibody was diluted at 1:200(4° overnight). 2, Tris-EDTA,pH9.0 was used for antigen retrieval. 3,Secondary antibody was diluted at 1:200(room temperature, 45min).

