



Golgin 45 rabbit pAb

Cat No.:ES7816

For research use only

Overview

Product Name	Golgin 45 rabbit pAb
Host species	Rabbit
Applications	WB;IHC;IF;ELISA
Species Cross-Reactivity	Human;Mouse
Recommended dilutions	Western Blot: 1/500 - 1/2000. Immunohistochemistry: 1/100 - 1/300. Immunofluorescence: 1/200 - 1/1000. ELISA: 1/20000. Not yet tested in other applications.
Immunogen	The antiserum was produced against synthesized peptide derived from human BLZF1. AA range:10-59
Specificity	Golgin 45 Polyclonal Antibody detects endogenous levels of Golgin 45 protein.
Formulation	Liquid in PBS containing 50% glycerol, 0.5% BSA and 0.02% sodium azide.
Storage	Store at -20°C. Avoid repeated freeze-thaw cycles.
Protein Name	Golgin-45
Gene Name	BLZF1
Cellular localization	Golgi apparatus membrane .; [Isoform 1]: Nucleus . Detected in the nucleus upon heterologous expression. Not detected in the cytoplasm. .; [Isoform 2]: Cytoplasm . Not detected in the nucleus. .
Purification	The antibody was affinity-purified from rabbit antiserum by affinity-chromatography using epitope-specific immunogen.
Clonality	Polyclonal
Concentration	1 mg/ml
Observed band	47kD
Human Gene ID	8548
Human Swiss-Prot Number	Q9H2G9
Alternative Names	BLZF1; JEM1; Golgin-45; Basic leucine zipper nuclear factor 1; JEM-1; p45 basic leucine-zipper nuclear factor

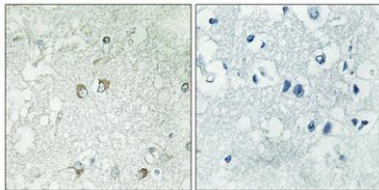




Background

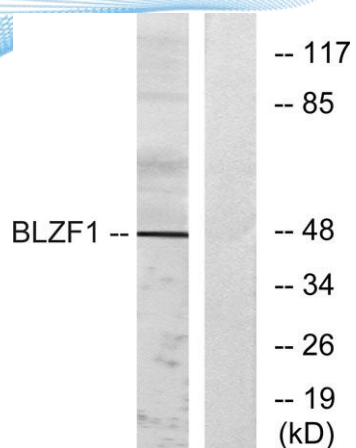
caution:Because of the presence of a potential basic motif and leucine-zipper domain, PubMed:9129147 and PubMed:11056056 have thought that BLZF1 is a potential transcription factor. They found it localized in the nucleus, except isoform 2, which was cytoplasmic. However, homology at several typical position for basic or hydrophobic residues is missing.,function:Required for normal Golgi structure and for protein transport from the endoplasmic reticulum (ER) through the Golgi apparatus to the cell surface.,induction:Up-regulated by retinoids.,subunit:Interacts with GORASP2 and with the GTP-bound form of RAB2, but not with other Golgi Rab proteins. GORASP2 and BLZF1 form a RAB2 effector complex on medial Golgi.,tissue specificity:Ubiquitous. Also found in cell lines derived from several hematopoietic pathologies, such as T-cell leukemia, pro-B, pre-B, myeloma, and plasmacytoma cell lines, but not in Burkitt lymphoma cells.,

Immunohistochemical analysis of paraffin-embedded Human brain. Antibody was diluted at 1:100(4° overnight). High-pressure and temperature Tris-EDTA,pH8.0 was used for antigen retrieval. Negative contrl (right) obtaned from antibody was pre-absorbed by i

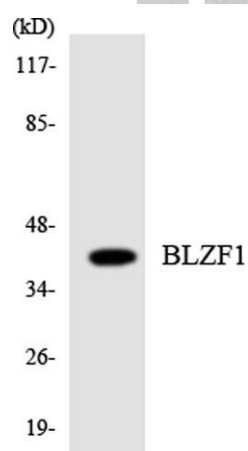




ELK Biotechnology



Western blot analysis of lysates from Jurkat cells, using BLZF1 Antibody. The lane on the right is blocked with the synthesized peptide.



Western blot analysis of the lysates from COLO205 cells using BLZF1 antibody.



+86-27-59760950

ELKbio@ELKbiotech.com

www.elkbiotech.com

23-2, No.388 Gaoxin 2nd Road, Wuhan East Lake Hi-tech Development Zone, Hubei, P.R.C