



# DGK-ε rabbit pAb

Cat No.:ES7806

For research use only

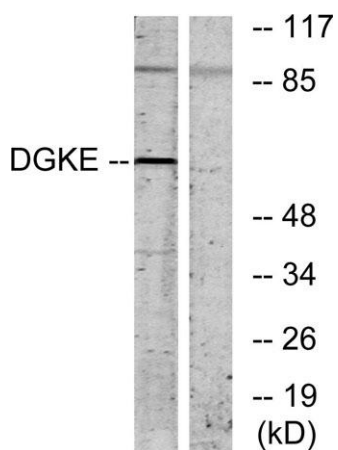
## Overview

|                                 |   |
|---------------------------------|---|
| <b>Product Name</b>             | DGK-ε rabbit pAb  |
| <b>Host species</b>             | Rabbit  |
| <b>Applications</b>             | WB;IHC;IF;ELISA   |
| <b>Species Cross-Reactivity</b> | Human;Mouse;Rat   |
| <b>Recommended dilutions</b>    | Western Blot: 1/500 - 1/2000.<br>Immunohistochemistry: 1/100 - 1/300. ELISA:<br>1/5000. Not yet tested in other applications.                             |
| <b>Immunogen</b>                | The antiserum was produced against synthesized peptide derived from human DGKE. AA range:161-210  |
| <b>Specificity</b>              | DGK-ε Polyclonal Antibody detects endogenous levels of DGK-ε protein.   |
| <b>Formulation</b>              | Liquid in PBS containing 50% glycerol, 0.5% BSA and 0.02% sodium azide.   |
| <b>Storage</b>                  | Store at -20°C. Avoid repeated freeze-thaw cycles.  |
| <b>Protein Name</b>             | Diacylglycerol kinase epsilon   |
| <b>Gene Name</b>                | DGKE  |
| <b>Cellular localization</b>    | Membrane ; Single-pass membrane protein .<br>Cytoplasm .  |
| <b>Purification</b>             | The antibody was affinity-purified from rabbit antiserum by affinity-chromatography using epitope-specific immunogen.                                     |
| <b>Clonality</b>                | Polyclonal  |
| <b>Concentration</b>            | 1 mg/ml   |
| <b>Observed band</b>            | 60kD  |
| <b>Human Gene ID</b>            | 8526  |
| <b>Human Swiss-Prot Number</b>  | P52429  |
| <b>Alternative Names</b>        | DGKE; DAGK5; Diacylglycerol kinase epsilon; DAG kinase epsilon; Diglyceride kinase epsilon; DGK-epsilon   |
| <b>Background</b>               | Diacylglycerol kinases are thought to be involved mainly in the regeneration of phosphatidylinositol (PI) from diacylglycerol in the PI-cycle during cell |





signal transduction. When expressed in mammalian cells, DGK-epsilon shows specificity for arachidonyl-containing diacylglycerol. DGK-epsilon is expressed predominantly in testis. [provided by RefSeq, Jul 2008],



Western blot analysis of lysates from K562 cells, using DGKE Antibody. The lane on the right is blocked with the synthesized peptide.

