



AGXT2L2 rabbit pAb

Cat No.:ES7796

For research use only

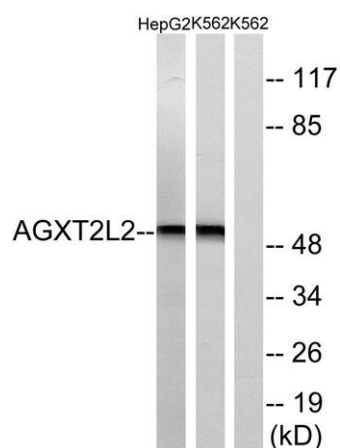
Overview

Product Name	AGXT2L2 rabbit pAb
Host species	Rabbit
Applications	WB;IHC;IF;ELISA
Species Cross-Reactivity	Human;Mouse;Rat
Recommended dilutions	Western Blot: 1/500 - 1/2000. Immunohistochemistry: 1/100 - 1/300. ELISA: 1/10000. Not yet tested in other applications.
Immunogen	The antiserum was produced against synthesized peptide derived from human AGXT2L2. AA range:341-390
Specificity	AGXT2L2 Polyclonal Antibody detects endogenous levels of AGXT2L2 protein.
Formulation	Liquid in PBS containing 50% glycerol, 0.5% BSA and 0.02% sodium azide.
Storage	Store at -20°C. Avoid repeated freeze-thaw cycles.
Protein Name	5-phosphohydroxy-L-lysine phospho-lyase
Gene Name	AGXT2L2
Cellular localization	Mitochondrion .
Purification	The antibody was affinity-purified from rabbit antiserum by affinity-chromatography using epitope-specific immunogen.
Clonality	Polyclonal
Concentration	1 mg/ml
Observed band	50kD
Human Gene ID	85007
Human Swiss-Prot Number	Q8IUZ5
Alternative Names	AGXT2L2; PP9286; 5-phosphohydroxy-L-lysine phospho-lyase; Alanine--glyoxylate aminotransferase 2-like 2
Background	5-phosphohydroxy-L-lysine phospho-lyase(PHYKPL) Homo sapiens This is a nuclear gene encoding a mitochondrial enzyme that catalyzes the conversion of 5-phosphonoxy-L-lysine to ammonia, inorganic

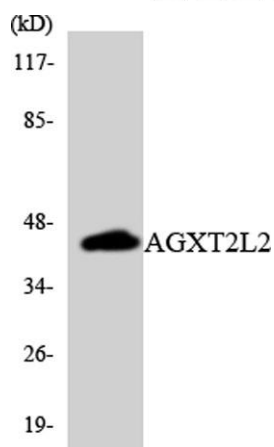




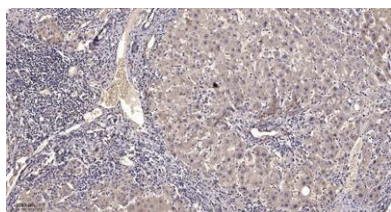
phosphate, and 2-aminoadipate semialdehyde. Mutations in this gene may cause phosphohydroxylysinuria. Alternative splicing results in multiple transcript variants. [provided by RefSeq, May 2013],



Western blot analysis of lysates from K562 and HepG2 cells, using AGXT2L2 Antibody. The lane on the right is blocked with the synthesized peptide.



Western blot analysis of the lysates from HUVEC cells using AGXT2L2 antibody.



Immunohistochemical analysis of paraffin-embedded human liver cancer. 1, Antibody was diluted at 1:200(4° overnight). 2, Tris-EDTA, pH9.0 was used for antigen retrieval. 3, Secondary antibody was diluted at 1:200(room temperature, 45min).

