



RELT rabbit pAb

Cat No.:ES7791

For research use only

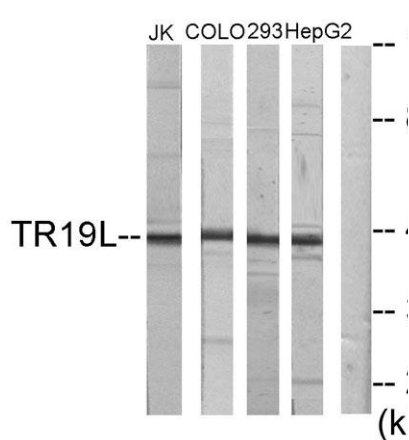
Overview

Product Name	RELT rabbit pAb
Host species	Rabbit
Applications	WB;IHC;IF;ELISA
Species Cross-Reactivity	Human;Mouse
Recommended dilutions	Western Blot: 1/500 - 1/2000. Immunohistochemistry: 1/100 - 1/300. Immunofluorescence: 1/200 - 1/1000. ELISA: 1/40000. Not yet tested in other applications.
Immunogen	The antiserum was produced against synthesized peptide derived from human RELT. AA range:381-430
Specificity	RELT Polyclonal Antibody detects endogenous levels of RELT protein.
Formulation	Liquid in PBS containing 50% glycerol, 0.5% BSA and 0.02% sodium azide.
Storage	Store at -20°C. Avoid repeated freeze-thaw cycles.
Protein Name	Tumor necrosis factor receptor superfamily member 19L
Gene Name	RELT
Cellular localization	Cell membrane ; Single-pass type I membrane protein . Cytoplasm . Cytoplasm, perinuclear region .
Purification	The antibody was affinity-purified from rabbit antiserum by affinity-chromatography using epitope-specific immunogen.
Clonality	Polyclonal
Concentration	1 mg/ml
Observed band	46kD
Human Gene ID	84957
Human Swiss-Prot Number	Q969Z4
Alternative Names	RELT; TNFRSF19L; Tumor necrosis factor receptor superfamily member 19L; Receptor expressed in lymphoid tissues
Background	The protein encoded by this gene is a member of

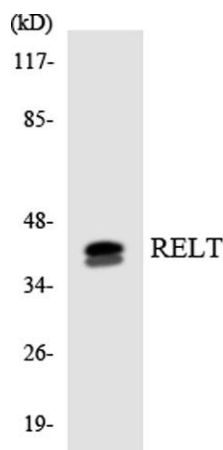




the TNF-receptor superfamily. This receptor is especially abundant in hematologic tissues. It has been shown to activate the NF-kappaB pathway and selectively bind TNF receptor-associated factor 1 (TRAF1). This receptor is capable of stimulating T-cell proliferation in the presence of CD3 signaling, which suggests its regulatory role in immune response. Two alternatively spliced transcript variants of this gene encoding the same protein have been reported. [provided by RefSeq, Jul 2008],



Western blot analysis of lysates from Jurkat, COLO205, 293, and HepG2 cells, using RELT Antibody. The lane on the right is blocked with the synthesized peptide.

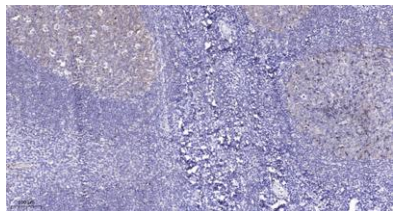


Western blot analysis of the lysates from Jurkat cells using RELT antibody.





ELK Biotechnology



Immunohistochemical analysis of paraffin-embedded human tonsil. 1, Tris-EDTA, pH 9.0 was used for antigen retrieval. 2 Antibody was diluted at 1:200 (4° overnight). 3, Secondary antibody was diluted at 1:200 (room temperature, 45 min).



+86-27-59760950

ELKbio@ELKbiotech.com

www.elkbiotech.com

23-2, No.388 Gaoxin 2nd Road, Wuhan East Lake Hi-tech Development Zone, Hubei, P.R.C