



GALR3 rabbit pAb

Cat No.:ES7783

For research use only

Overview

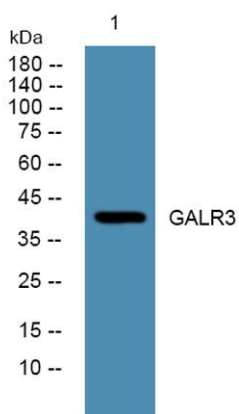
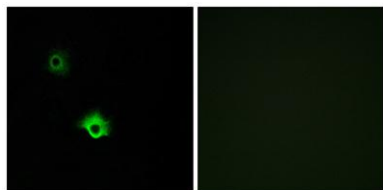
Product Name	GALR3 rabbit pAb
Host species	Rabbit
Applications	WB;IF;ELISA
Species Cross-Reactivity	Human;Rat;Mouse;
Recommended dilutions	Western Blot: 1/500 - 1/2000. Immunofluorescence: 1/200 - 1/1000. ELISA: 1/40000. Not yet tested in other applications.
Immunogen	The antiserum was produced against synthesized peptide derived from human GALR3. AA range:291-340
Specificity	GALR3 Polyclonal Antibody detects endogenous levels of GALR3 protein.
Formulation	Liquid in PBS containing 50% glycerol, 0.5% BSA and 0.02% sodium azide.
Storage	Store at -20°C. Avoid repeated freeze-thaw cycles.
Protein Name	Galanin receptor type 3
Gene Name	GALR3
Cellular localization	Cell membrane; Multi-pass membrane protein.
Purification	The antibody was affinity-purified from rabbit antiserum by affinity-chromatography using epitope-specific immunogen.
Clonality	Polyclonal
Concentration	1 mg/ml
Observed band	40kD
Human Gene ID	8484
Human Swiss-Prot Number	O60755
Alternative Names	GALR3; GALNR3; Galanin receptor type 3; GAL3-R; GALR-3
Background	The neuropeptide galanin modulates a variety of physiologic processes including cognition/memory, sensory/pain processing, hormone secretion, and feeding behavior. The human galanin receptors are G protein-coupled receptors that functionally couple





to their intracellular effector through distinct signaling pathways. GALR3 is found in many tissues and may be expressed as 1.4-, 2.4-, and 5-kb transcripts [provided by RefSeq, Jul 2008],

Immunofluorescence analysis of A549 cells, using GALR3 Antibody. The picture on the right is blocked with the synthesized peptide.



Western blot analysis of lysates from KB cells, primary antibody was diluted at 1:1000, 4° over night

