



SPZ1 rabbit pAb

Cat No.:ES7771

For research use only

Overview

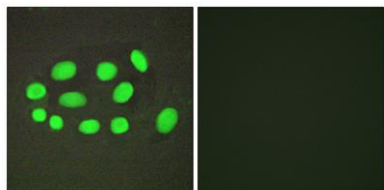
Product Name	SPZ1 rabbit pAb
Host species	Rabbit
Applications	IHC;IF;WB;ELISA
Species Cross-Reactivity	Human;Rat;Mouse;
Recommended dilutions	WB 1:500-2000 Immunohistochemistry: 1/100 - 1/300. Immunofluorescence: 1/200 - 1/1000. ELISA: 1/20000. Not yet tested in other applications.
Immunogen	The antiserum was produced against synthesized peptide derived from human SPZ1. AA range:111-160
Specificity	SPZ1 Polyclonal Antibody detects endogenous levels of SPZ1 protein.
Formulation	Liquid in PBS containing 50% glycerol, 0.5% BSA and 0.02% sodium azide.
Storage	Store at -20°C. Avoid repeated freeze-thaw cycles.
Protein Name	Spermatogenic leucine zipper protein 1
Gene Name	SPZ1
Cellular localization	Cytoplasm . Nucleus .
Purification	The antibody was affinity-purified from rabbit antiserum by affinity-chromatography using epitope-specific immunogen.
Clonality	Polyclonal
Concentration	1 mg/ml
Observed band	133kD
Human Gene ID	84654
Human Swiss-Prot Number	Q9BXG8
Alternative Names	SPZ1; TSP1; Spermatogenic leucine zipper protein 1; Testis-specific protein 1; Testis-specific protein NYD-TSP1
Background	This gene encodes a bHLH-zip transcription factor which functions in the mitogen-activate protein kinase (MAPK) signaling pathway. Because of its role in the upregulation of cell proliferation and





tumorigenesis, this gene may serve as a target for Ras-induced tumor treatments. [provided by RefSeq, Oct 2011],

Immunofluorescence analysis of A549 cells, using SPZ1 Antibody. The picture on the right is blocked with the synthesized peptide.



Immunohistochemistry analysis of paraffin-embedded human testis tissue, using SPZ1 Antibody. The picture on the right is blocked with the synthesized peptide.

