



COL25A1 rabbit pAb

Cat No.:ES7762

For research use only

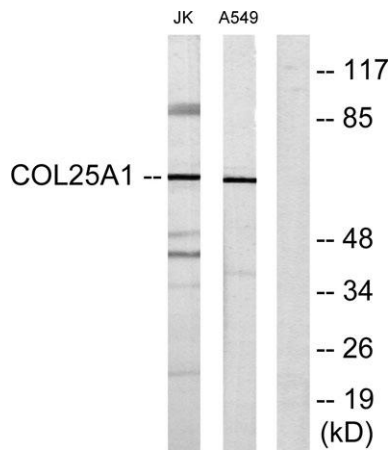
Overview

Product Name	COL25A1 rabbit pAb
Host species	Rabbit
Applications	WB;IHC;IF;ELISA
Species Cross-Reactivity	Human;Mouse
Recommended dilutions	Western Blot: 1/500 - 1/2000. Immunohistochemistry: 1/100 - 1/300. Immunofluorescence: 1/200 - 1/1000. ELISA: 1/20000. Not yet tested in other applications.
Immunogen	The antiserum was produced against synthesized peptide derived from human Collagen XXV alpha1. AA range:101-150
Specificity	COL25A1 Polyclonal Antibody detects endogenous levels of COL25A1 protein.
Formulation	Liquid in PBS containing 50% glycerol, 0.5% BSA and 0.02% sodium azide.
Storage	Store at -20°C. Avoid repeated freeze-thaw cycles.
Protein Name	Collagen alpha-1(XXV) chain
Gene Name	COL25A1
Cellular localization	Membrane ; Single-pass type II membrane protein . After proteolytic cleavage, CLAC is secreted.
Purification	The antibody was affinity-purified from rabbit antiserum by affinity-chromatography using epitope-specific immunogen.
Clonality	Polyclonal
Concentration	1 mg/ml
Observed band	64kD
Human Gene ID	84570
Human Swiss-Prot Number	Q9BXS0
Alternative Names	COL25A1; Collagen alpha-1(XXV) chain; Alzheimer disease amyloid-associated protein; AMY; CLAC-P
Background	This gene encodes a brain-specific membrane associated collagen. A product of proteolytic processing of the encoded protein, CLAC





(collagenous Alzheimer amyloid plaque component), binds to amyloid beta-peptides found in Alzheimer amyloid plaques but CLAC inhibits rather than facilitates amyloid fibril elongation (PMID: 16300410). A study of over-expression of this collagen in mice, however, found changes in pathology and behavior suggesting that the encoded protein may promote amyloid plaque formation (PMID: 19548013). Multiple transcript variants encoding different isoforms have been found for this gene. [provided by RefSeq, Dec 2011],



Western blot analysis of lysates from Jurkat and A549 cells, using Collagen XXV alpha1 Antibody. The lane on the right is blocked with the synthesized peptide.

