



# TMEM101 rabbit pAb

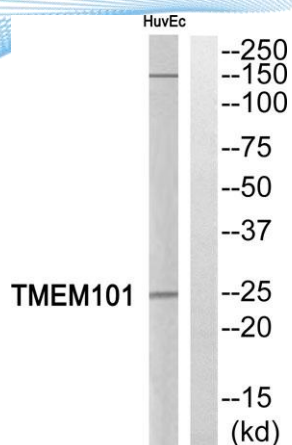
Cat No.:ES7750

For research use only

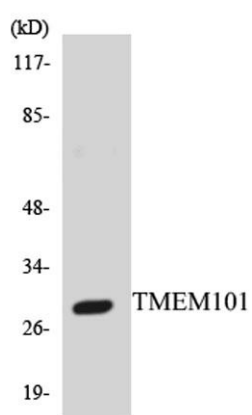
## Overview

<b>Product Name</b>	TMEM101 rabbit pAb
<b>Host species</b>	Rabbit
<b>Applications</b>	WB;ELISA
<b>Species Cross-Reactivity</b>	Human;Mouse
<b>Recommended dilutions</b>	Western Blot: 1/500 - 1/2000. ELISA: 1/10000. Not yet tested in other applications.
<b>Immunogen</b>	The antiserum was produced against synthesized peptide derived from human TMEM101. AA range:101-150
<b>Specificity</b>	TMEM101 Polyclonal Antibody detects endogenous levels of TMEM101 protein.
<b>Formulation</b>	Liquid in PBS containing 50% glycerol, 0.5% BSA and 0.02% sodium azide.
<b>Storage</b>	Store at -20°C. Avoid repeated freeze-thaw cycles.
<b>Protein Name</b>	Transmembrane protein 101
<b>Gene Name</b>	TMEM101
<b>Cellular localization</b>	Membrane ; Multi-pass membrane protein .
<b>Purification</b>	The antibody was affinity-purified from rabbit antiserum by affinity-chromatography using epitope-specific immunogen.
<b>Clonality</b>	Polyclonal
<b>Concentration</b>	1 mg/ml
<b>Observed band</b>	28kD
<b>Human Gene ID</b>	84336
<b>Human Swiss-Prot Number</b>	Q96IK0
<b>Alternative Names</b>	TMEM101; Transmembrane protein 101; Putative NF-kappa-B-activating protein 130
<b>Background</b>	function:May activate NF-kappa-B signaling pathways.,





Western blot analysis of TMEM101 Antibody. The lane on the right is blocked with the TMEM101 peptide.



Western blot analysis of the lysates from HepG2 cells using TMEM101 antibody.

