



# MOF rabbit pAb

Cat No.:ES7736

For research use only

## Overview

<b>Product Name</b>	MOF rabbit pAb
<b>Host species</b>	Rabbit
<b>Applications</b>	IHC;IF;ELISA
<b>Species Cross-Reactivity</b>	Human;Mouse;Rat
<b>Recommended dilutions</b>	Immunohistochemistry: 1/100 - 1/300. ELISA: 1/10000. Not yet tested in other applications.
<b>Immunogen</b>	The antiserum was produced against synthesized peptide derived from human MYST1. AA range:101-150
<b>Specificity</b>	MOF Polyclonal Antibody detects endogenous levels of MOF protein.
<b>Formulation</b>	Liquid in PBS containing 50% glycerol, 0.5% BSA and 0.02% sodium azide.
<b>Storage</b>	Store at -20°C. Avoid repeated freeze-thaw cycles.
<b>Protein Name</b>	Histone acetyltransferase KAT8
<b>Gene Name</b>	KAT8
<b>Cellular localization</b>	Nucleus . Chromosome .
<b>Purification</b>	The antibody was affinity-purified from rabbit antiserum by affinity-chromatography using epitope-specific immunogen.
<b>Clonality</b>	Polyclonal
<b>Concentration</b>	1 mg/ml
<b>Observed band</b>	
<b>Human Gene ID</b>	84148
<b>Human Swiss-Prot Number</b>	Q9H7Z6
<b>Alternative Names</b>	KAT8; MOF; MYST1; PP7073; Histone acetyltransferase KAT8; Lysine acetyltransferase 8; MOZ; YBF2/SAS3, SAS2 and TIP60 protein 1; MYST-1; hMOF
<b>Background</b>	This gene encodes a member of the MYST histone acetylase protein family. The encoded protein has a characteristic MYST domain containing an acetyl-CoA-binding site, a chromodomain typical of

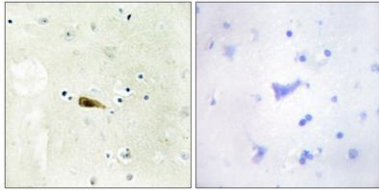




**ELK Biotechnology**

proteins which bind histones, and a C2HC-type zinc finger. Multiple transcript variants encoding different isoforms have been found for this gene. [provided by RefSeq, Feb 2012],

Immunohistochemistry analysis of paraffin-embedded human brain tissue, using MYST1 Antibody. The picture on the right is blocked with the synthesized peptide.



+86-27-59760950

[ELKbio@ELKbiotech.com](mailto:ELKbio@ELKbiotech.com)

[www.elkbiotech.com](http://www.elkbiotech.com)

23-2, No.388 Gaoxin 2nd Road, Wuhan East Lake Hi-tech Development Zone, Hubei, P.R.C