



TCF-3 rabbit pAb

Cat No.:ES7682

For research use only

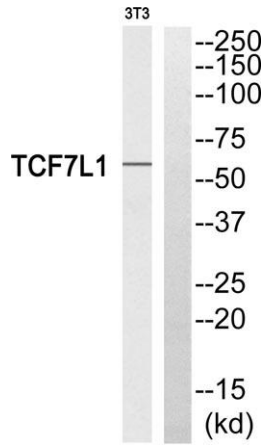
Overview

Product Name	TCF-3 rabbit pAb
Host species	Rabbit
Applications	WB;ELISA
Species Cross-Reactivity	Human;Mouse
Recommended dilutions	Western Blot: 1/500 - 1/2000. ELISA: 1/10000. Not yet tested in other applications.
Immunogen	The antiserum was produced against synthesized peptide derived from human TCF7L1. AA range:321-370
Specificity	TCF-3 Polyclonal Antibody detects endogenous levels of TCF-3 protein.
Formulation	Liquid in PBS containing 50% glycerol, 0.5% BSA and 0.02% sodium azide.
Storage	Store at -20°C. Avoid repeated freeze-thaw cycles.
Protein Name	Transcription factor 7-like 1
Gene Name	TCF7L1
Cellular localization	Nucleus.
Purification	The antibody was affinity-purified from rabbit antiserum by affinity-chromatography using epitope-specific immunogen.
Clonality	Polyclonal
Concentration	1 mg/ml
Observed band	63kD
Human Gene ID	83439
Human Swiss-Prot Number	Q9HCS4
Alternative Names	TCF7L1; TCF3; Transcription factor 7-like 1; HMG box transcription factor 3; TCF-3
Background	This gene encodes a member of the T cell factor/lymphoid enhancer factor family of transcription factors. These transcription factors are activated by beta catenin, mediate the Wnt signaling pathway and are antagonized by the transforming growth factor beta signaling pathway. The encoded

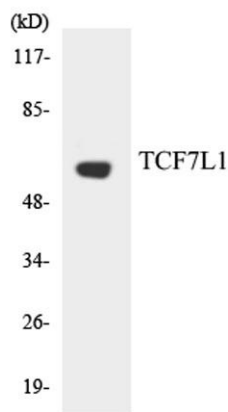




protein contains a high mobility group-box DNA binding domain and participates in the regulation of cell cycle genes and cellular senescence. [provided by RefSeq, Nov 2010],



Western blot analysis of TCF7L1 Antibody. The lane on the right is blocked with the TCF7L1 peptide.



Western blot analysis of the lysates from HUVEC cells using TCF7L1 antibody.

