



MIA rabbit pAb

Cat No.:ES7654

For research use only

Overview

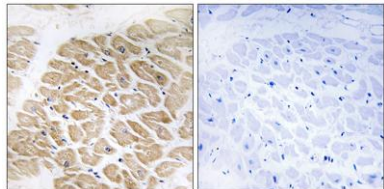
| | |
|---------------------------------|---|
| Product Name | MIA rabbit pAb |
| Host species | Rabbit |
| Applications | IHC;IF;ELISA |
| Species Cross-Reactivity | Human;Mouse;Rat |
| Recommended dilutions | Immunohistochemistry: 1/100 - 1/300. ELISA: 1/40000. Not yet tested in other applications. |
| Immunogen | The antiserum was produced against synthesized peptide derived from human MIA. AA range:82-131 |
| Specificity | MIA Polyclonal Antibody detects endogenous levels of MIA protein. |
| Formulation | Liquid in PBS containing 50% glycerol, 0.5% BSA and 0.02% sodium azide. |
| Storage | Store at -20°C. Avoid repeated freeze-thaw cycles. |
| Protein Name | Melanoma-derived growth regulatory protein |
| Gene Name | MIA |
| Cellular localization | Secreted. |
| Purification | The antibody was affinity-purified from rabbit antiserum by affinity-chromatography using epitope-specific immunogen. |
| Clonality | Polyclonal |
| Concentration | 1 mg/ml |
| Observed band | |
| Human Gene ID | 8190 |
| Human Swiss-Prot Number | Q16674 |
| Alternative Names | MIA; Melanoma-derived growth regulatory protein; Melanoma inhibitory activity protein |
| Background | function:Elicits growth inhibition on melanoma cells in vitro as well as some other neuroectodermal tumors, including gliomas.,PTM:May possess two intramolecular disulfide bonds.,similarity:Belongs to the MIA/OTOR family.,similarity:Contains 1 SH3 domain.,tissue specificity:All malignant melanoma cell lines tested and infrequently in glioma cell lines., |





ELK Biotechnology

Immunohistochemistry analysis of paraffin-embedded human heart tissue, using MIA Antibody. The picture on the right is blocked with the synthesized peptide.



+86-27-59760950

ELKbio@ELKbiotech.com

www.elkbiotech.com

23-2, No.388 Gaoxin 2nd Road, Wuhan East Lake Hi-tech Development Zone, Hubei, P.R.C.