



# Rab 1B rabbit pAb

Cat No.:ES7653

For research use only

## Overview

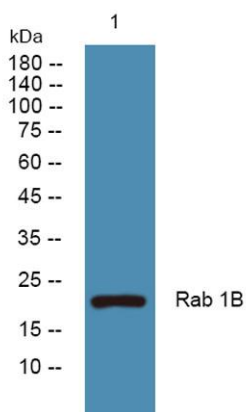
<b>Product Name</b>	Rab 1B rabbit pAb
<b>Host species</b>	Rabbit
<b>Applications</b>	WB;ELISA;IHC
<b>Species Cross-Reactivity</b>	Human;Mouse;Rat
<b>Recommended dilutions</b>	WB 1:500-2000;IHC-p 1:50-300; ELISA 2000-20000
<b>Immunogen</b>	Synthesized peptide derived from Rab 1B . at AA range: 50-130
<b>Specificity</b>	Rab 1B Polyclonal Antibody detects endogenous levels of Rab 1B protein.
<b>Formulation</b>	Liquid in PBS containing 50% glycerol, 0.5% BSA and 0.02% sodium azide.
<b>Storage</b>	Store at -20°C. Avoid repeated freeze-thaw cycles.
<b>Protein Name</b>	Ras-related protein Rab-1B
<b>Gene Name</b>	RAB1B
<b>Cellular localization</b>	Cytoplasm . Membrane ; Lipid-anchor ; Cytoplasmic side . Preautophagosomal structure membrane ; Lipid-anchor ; Cytoplasmic side . Cytoplasm, perinuclear region . Targeted by REP1 to membranes of specific subcellular compartments including endoplasmic reti
<b>Purification</b>	The antibody was affinity-purified from rabbit antiserum by affinity-chromatography using epitope-specific immunogen.
<b>Clonality</b>	Polyclonal
<b>Concentration</b>	1 mg/ml
<b>Observed band</b>	22kD
<b>Human Gene ID</b>	81876
<b>Human Swiss-Prot Number</b>	Q9H0U4
<b>Alternative Names</b>	RAB1B; Ras-related protein Rab-1B
<b>Background</b>	Members of the RAB protein family, such as RAB1B, are low molecular mass monomeric GTPases localized on the cytoplasmic surfaces of distinct membrane-bound organelles. RAB1B functions in





the early secretory pathway and is essential for vesicle transport between the endoplasmic reticulum (ER) and Golgi (Chen et al., 1997 [PubMed 9030196]; Alvarez et al., 2003 [PubMed 12802079]).[supplied by OMIM, Jan 2009],

Western blot analysis of lysates from SH-SY5Y cells, primary antibody was diluted at 1:1000, 4° over night



Immunohistochemical analysis of paraffin-embedded human Colon cancer. 1, Antibody was diluted at 1:200(4° overnight). 2, Tris-EDTA,pH9.0 was used for antigen retrieval. 3,Secondary antibody was diluted at 1:200(room temperature, 45min).

