



ApoL4 rabbit pAb

Cat No.:ES7626

For research use only

Overview

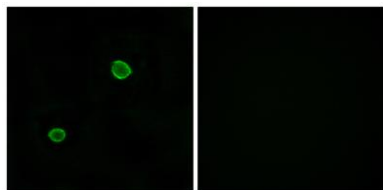
Product Name	ApoL4 rabbit pAb
Host species	Rabbit
Applications	WB;IHC;IF;ELISA
Species Cross-Reactivity	Human;Rat;Mouse;
Recommended dilutions	Western Blot: 1/500 - 1/2000. Immunohistochemistry: 1/100 - 1/300. Immunofluorescence: 1/200 - 1/1000. ELISA: 1/20000. Not yet tested in other applications.
Immunogen	The antiserum was produced against synthesized peptide derived from human APOL4. AA range:301-350
Specificity	ApoL4 Polyclonal Antibody detects endogenous levels of ApoL4 protein.
Formulation	Liquid in PBS containing 50% glycerol, 0.5% BSA and 0.02% sodium azide.
Storage	Store at -20°C. Avoid repeated freeze-thaw cycles.
Protein Name	Apolipoprotein L4
Gene Name	APOL4
Cellular localization	Secreted .
Purification	The antibody was affinity-purified from rabbit antiserum by affinity-chromatography using epitope-specific immunogen.
Clonality	Polyclonal
Concentration	1 mg/ml
Observed band	34kD
Human Gene ID	80832
Human Swiss-Prot Number	Q9BPW4
Alternative Names	APOL4; Apolipoprotein L4; Apolipoprotein L-IV; ApoL-IV
Background	The protein encoded by this gene is a member of the apolipoprotein L family and may play a role in lipid exchange and transport throughout the body, as well as in reverse cholesterol transport from



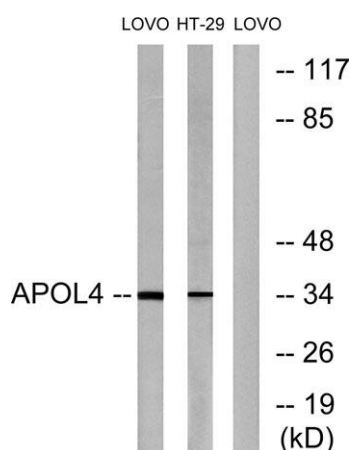
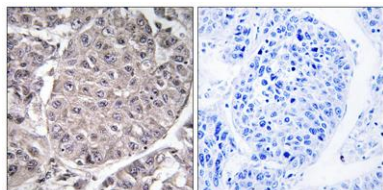


peripheral cells to the liver. Two transcript variants encoding two different isoforms have been found for this gene. Only one of the isoforms appears to be a secreted protein. [provided by RefSeq, Jul 2008],

Immunofluorescence analysis of MCF7 cells, using APOL4 Antibody. The picture on the right is blocked with the synthesized peptide.



Immunohistochemistry analysis of paraffin-embedded human liver carcinoma tissue, using APOL4 Antibody. The picture on the right is blocked with the synthesized peptide.



Western blot analysis of lysates from LOVO and HT-29 cells, using APOL4 Antibody. The lane on the right is blocked with the synthesized peptide.

