



COL18A1 rabbit pAb

Cat No.:ES7623

For research use only

Overview

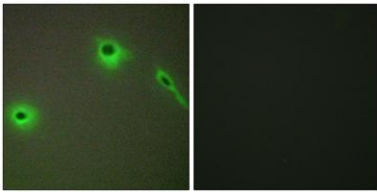
Product Name	COL18A1 rabbit pAb
Host species	Rabbit
Applications	IHC;IF;ELISA
Species Cross-Reactivity	Human;Mouse
Recommended dilutions	Immunohistochemistry: 1/100 - 1/300. Immunofluorescence: 1/200 - 1/1000. ELISA: 1/5000. Not yet tested in other applications.
Immunogen	The antiserum was produced against synthesized peptide derived from human Collagen XVIII alpha1. AA range:801-850
Specificity	COL18A1 Polyclonal Antibody detects endogenous levels of COL18A1 protein.
Formulation	Liquid in PBS containing 50% glycerol, 0.5% BSA and 0.02% sodium azide.
Storage	Store at -20°C. Avoid repeated freeze-thaw cycles.
Protein Name	Collagen alpha-1(XVIII) chain
Gene Name	COL18A1
Cellular localization	Secreted, extracellular space, extracellular matrix . Secreted, extracellular space, extracellular matrix, basement membrane .; [Non-collagenous domain 1]: Secreted, extracellular space, extracellular matrix, basement membrane . Secreted .; [Endostatin]:
Purification	The antibody was affinity-purified from rabbit antiserum by affinity-chromatography using epitope-specific immunogen.
Clonality	Polyclonal
Concentration	1 mg/ml
Observed band	
Human Gene ID	80781
Human Swiss-Prot Number	P39060
Alternative Names	COL18A1; Collagen alpha-1(XVIII) chain
Background	This gene encodes the alpha chain of type XVIII



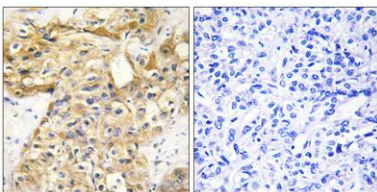


collagen. This collagen is one of the multiplexins, extracellular matrix proteins that contain multiple triple-helix domains (collagenous domains) interrupted by non-collagenous domains. A long isoform of the protein has an N-terminal domain that is homologous to the extracellular part of frizzled receptors. Proteolytic processing at several endogenous cleavage sites in the C-terminal domain results in production of endostatin, a potent antiangiogenic protein that is able to inhibit angiogenesis and tumor growth. Mutations in this gene are associated with Knobloch syndrome. The main features of this syndrome involve retinal abnormalities, so type XVIII collagen may play an important role in retinal structure and in neural tube closure. Alternative splicing results in multiple transcript variants. [provided by RefSeq, Dec 2014],

Immunofluorescence analysis of A549 cells, using Collagen XVIII alpha1 Antibody. The picture on the right is blocked with the synthesized peptide.

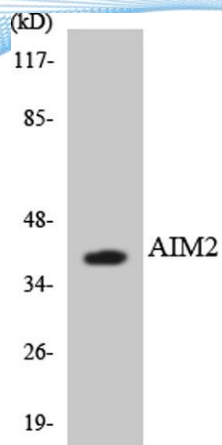


Immunohistochemistry analysis of paraffin-embedded human liver carcinoma tissue, using Collagen XVIII alpha1 Antibody. The picture on the right is blocked with the synthesized peptide.





ELK Biotechnology



Western blot analysis of the lysates from HeLa cells using AIM2 antibody.



+86-27-59760950

ELKbio@ELKbiotech.com

www.elkbiotech.com

23-2, No.388 Gaoxin 2nd Road, Wuhan East Lake Hi-tech Development Zone, Hubei, P.R.C