



NOR-1 rabbit pAb

Cat No.:ES7612

For research use only

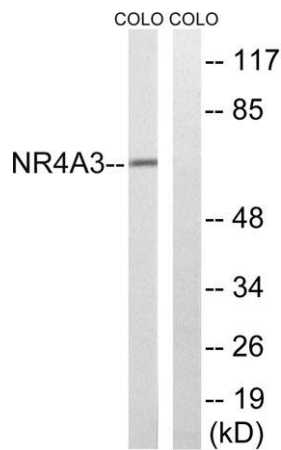
Overview

Product Name	NOR-1 rabbit pAb
Host species	Rabbit
Applications	WB;ELISA
Species Cross-Reactivity	Human;Mouse;Rat
Recommended dilutions	Western Blot: 1/500 - 1/2000. ELISA: 1/40000. Not yet tested in other applications.
Immunogen	The antiserum was produced against synthesized peptide derived from human NR4A3. AA range:387-436
Specificity	NOR-1 Polyclonal Antibody detects endogenous levels of NOR-1 protein.
Formulation	Liquid in PBS containing 50% glycerol, 0.5% BSA and 0.02% sodium azide.
Storage	Store at -20°C. Avoid repeated freeze-thaw cycles.
Protein Name	Nuclear receptor subfamily 4 group A member 3
Gene Name	NR4A3
Cellular localization	Nucleus .
Purification	The antibody was affinity-purified from rabbit antiserum by affinity-chromatography using epitope-specific immunogen.
Clonality	Polyclonal
Concentration	1 mg/ml
Observed band	65kD
Human Gene ID	8013
Human Swiss-Prot Number	Q92570
Alternative Names	NR4A3; CHN; CSMF; MINOR; NOR1; TEC; Nuclear receptor subfamily 4 group A member 3; Mitogen-induced nuclear orphan receptor; Neuron-derived orphan receptor 1; Nuclear hormone receptor NOR-1
Background	This gene encodes a member of the steroid-thyroid hormone-retinoid receptor superfamily. The encoded protein may act as a transcriptional





activator. The protein can efficiently bind the NGFI-B Response Element (NBRE). Three different versions of extraskeletal myxoid chondrosarcomas (EMCs) are the result of reciprocal translocations between this gene and other genes. The translocation breakpoints are associated with Nuclear Receptor Subfamily 4, Group A, Member 3 (on chromosome 9) and either Ewing Sarcome Breakpoint Region 1 (on chromosome 22), RNA Polymerase II, TATA Box-Binding Protein-Associated Factor, 68-KD (on chromosome 17), or Transcription factor 12 (on chromosome 15). Multiple transcript variants encoding different isoforms have been found for this gene. [provided by RefSeq, Mar 2010],



Western blot analysis of lysates from COLO cells, using NR4A3 Antibody. The lane on the right is blocked with the synthesized peptide.

