



# SgK269 rabbit pAb

Cat No.:ES7596

For research use only

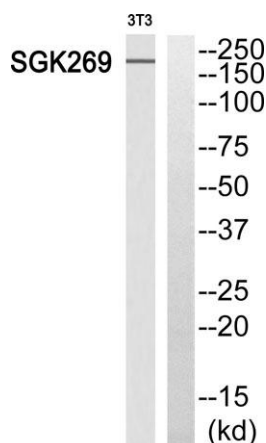
## Overview

<b>Product Name</b>	SgK269 rabbit pAb
<b>Host species</b>	Rabbit
<b>Applications</b>	WB;IHC
<b>Species Cross-Reactivity</b>	Human;Rat;Mouse;
<b>Recommended dilutions</b>	WB 1:500-2000;IHC-p 1:50-300
<b>Immunogen</b>	The antiserum was produced against synthesized peptide derived from human SGK269. AA range:111-160
<b>Specificity</b>	SgK269 Polyclonal Antibody detects endogenous levels of SgK269 protein.
<b>Formulation</b>	Liquid in PBS containing 50% glycerol, 0.5% BSA and 0.02% sodium azide.
<b>Storage</b>	Store at -20°C. Avoid repeated freeze-thaw cycles.
<b>Protein Name</b>	Pseudopodium-enriched atypical kinase 1
<b>Gene Name</b>	PEAK1
<b>Cellular localization</b>	Cytoplasm, cytoskeleton . Cell junction, focal adhesion . Colocalizes with F-actin in serum-rich medium (PubMed:20534451). Actin colocalization is reduced during serum starvation (PubMed:20534451). .
<b>Purification</b>	The antibody was affinity-purified from rabbit antiserum by affinity-chromatography using epitope-specific immunogen.
<b>Clonality</b>	Polyclonal
<b>Concentration</b>	1 mg/ml
<b>Observed band</b>	195kD
<b>Human Gene ID</b>	79834
<b>Human Swiss-Prot Number</b>	Q9H792
<b>Alternative Names</b>	PEAK1; KIAA2002; Pseudopodium-enriched atypical kinase 1; Sugen kinase 269; Tyrosine-protein kinase SgK269
<b>Background</b>	This gene encodes a non-receptor tyrosine kinase that is a member of the new kinase family three

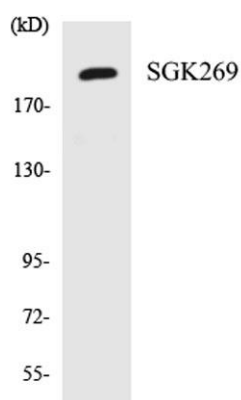




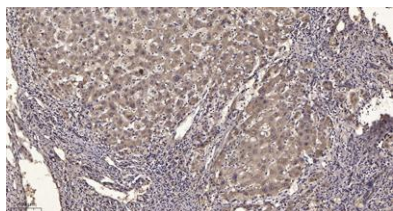
(NFK3) family. In migrating cells, the encoded protein is associated with the actin cytoskeleton and focal adhesions and promotes developing focal adhesion elongation. This protein may play a role in the regulation of cell migration, proliferation and cancer metastasis. [provided by RefSeq, Mar 2014],



Western blot analysis of SGK269 Antibody. The lane on the right is blocked with the SGK269 peptide.



Western blot analysis of the lysates from 293 cells using SGK269 antibody.



Immunohistochemical analysis of paraffin-embedded human liver cancer. 1, Antibody was diluted at 1:200(4° overnight). 2, Tris-EDTA,pH9.0 was used for antigen retrieval. 3,Secondary antibody was diluted at 1:200(room temperature, 45min).

