



DHRS11 rabbit pAb

Cat No.:ES7568

For research use only

Overview

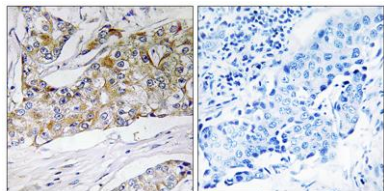
Product Name	DHRS11 rabbit pAb
Host species	Rabbit
Applications	IHC;IF;WB;ELISA
Species Cross-Reactivity	Human;Mouse
Recommended dilutions	WB 1:500-2000 Immunohistochemistry: 1/100 - 1/300. ELISA: 1/20000. Not yet tested in other applications.
Immunogen	The antiserum was produced against synthesized peptide derived from human DHRS11. AA range:111-160
Specificity	DHRS11 Polyclonal Antibody detects endogenous levels of DHRS11 protein.
Formulation	Liquid in PBS containing 50% glycerol, 0.5% BSA and 0.02% sodium azide.
Storage	Store at -20°C. Avoid repeated freeze-thaw cycles.
Protein Name	Dehydrogenase/reductase SDR family member 11
Gene Name	DHRS11
Cellular localization	Secreted .
Purification	The antibody was affinity-purified from rabbit antiserum by affinity-chromatography using epitope-specific immunogen.
Clonality	Polyclonal
Concentration	1 mg/ml
Observed band	
Human Gene ID	79154
Human Swiss-Prot Number	Q6UWP2
Alternative Names	DHRS11; Dehydrogenase/reductase SDR family member 11
Background	similarity:Belongs to the short-chain dehydrogenases/reductases (SDR) family.,subunit:Homotetramer.,





ELK Biotechnology

Immunohistochemistry analysis of paraffin-embedded human breast carcinoma tissue, using DHRS11 Antibody. The picture on the right is blocked with the synthesized peptide.



+86-27-59760950

ELKbio@ELKbiotech.com

www.elkbiotech.com

23-2, No.388 Gaoxin 2nd Road,Wuhan East Lake Hi-tech Development Zone, Hubei , P.R.C