



# CAD (phospho Thr456) rabbit pAb

Cat No.:ES7563

For research use only

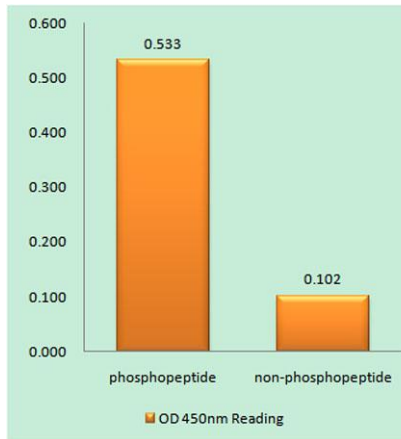
## Overview

<b>Product Name</b>	CAD (phospho Thr456) rabbit pAb
<b>Host species</b>	Rabbit
<b>Applications</b>	IHC;IF;ELISA
<b>Species Cross-Reactivity</b>	Human;Mouse
<b>Recommended dilutions</b>	Immunohistochemistry: 1/100 - 1/300. ELISA: 1/5000. Not yet tested in other applications.
<b>Immunogen</b>	The antiserum was produced against synthesized peptide derived from human CAD around the phosphorylation site of Thr456. AA range:422-471
<b>Specificity</b>	Phospho-CAD (T456) Polyclonal Antibody detects endogenous levels of CAD protein only when phosphorylated at T456.
<b>Formulation</b>	Liquid in PBS containing 50% glycerol, 0.5% BSA and 0.02% sodium azide.
<b>Storage</b>	Store at -20°C. Avoid repeated freeze-thaw cycles.
<b>Protein Name</b>	CAD protein
<b>Gene Name</b>	CAD
<b>Cellular localization</b>	Cytoplasm . Nucleus . Cytosolic and unphosphorylated in resting cells, translocates to the nucleus in response to EGF stimulation, nuclear import promotes optimal cell growth.
<b>Purification</b>	The antibody was affinity-purified from rabbit antiserum by affinity-chromatography using epitope-specific immunogen.
<b>Clonality</b>	Polyclonal
<b>Concentration</b>	1 mg/ml
<b>Observed band</b>	
<b>Human Gene ID</b>	790
<b>Human Swiss-Prot Number</b>	P27708
<b>Alternative Names</b>	CAD; CAD protein
<b>Background</b>	The de novo synthesis of pyrimidine nucleotides is required for mammalian cells to proliferate. This gene encodes a trifunctional protein which is





associated with the enzymatic activities of the first 3 enzymes in the 6-step pathway of pyrimidine biosynthesis: carbamoylphosphate synthetase (CPS II), aspartate transcarbamoylase, and dihydroorotase. This protein is regulated by the mitogen-activated protein kinase (MAPK) cascade, which indicates a direct link between activation of the MAPK cascade and de novo biosynthesis of pyrimidine nucleotides. Alternative splicing results in multiple transcript variants encoding different isoforms. [provided by RefSeq, Apr 2015],



Enzyme-Linked Immunosorbent Assay (Phospho-ELISA) for Immunogen Phosphopeptide (Phospho-left) and Non-Phosphopeptide (Phospho-right), using CAD (Phospho-Thr456) Antibody

Immunohistochemistry analysis of paraffin-embedded human colon carcinoma, using CAD (Phospho-Thr456) Antibody. The picture on the right is blocked with the phospho peptide.

