



Wee1 (phospho Ser642) rabbit pAb

Cat No.:ES7515

For research use only

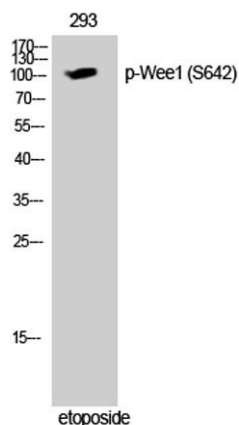
Overview

Product Name	Wee1 (phospho Ser642) rabbit pAb
Host species	Rabbit
Applications	WB;ELISA
Species Cross-Reactivity	Human;Mouse;Rat
Recommended dilutions	Western Blot: 1/500 - 1/2000. ELISA: 1/5000. Not yet tested in other applications.
Immunogen	The antiserum was produced against synthesized peptide derived from human WEE1 around the phosphorylation site of Ser642. AA range:597-646
Specificity	Phospho-Wee1 (S642) Polyclonal Antibody detects endogenous levels of Wee1 protein only when phosphorylated at S642.
Formulation	Liquid in PBS containing 50% glycerol, 0.5% BSA and 0.02% sodium azide.
Storage	Store at -20°C. Avoid repeated freeze-thaw cycles.
Protein Name	Wee1-like protein kinase
Gene Name	WEE1
Cellular localization	Nucleus.
Purification	The antibody was affinity-purified from rabbit antiserum by affinity-chromatography using epitope-specific immunogen.
Clonality	Polyclonal
Concentration	1 mg/ml
Observed band	100kD
Human Gene ID	7465
Human Swiss-Prot Number	P30291
Alternative Names	WEE1; Wee1-like protein kinase; WEE1hu; Wee1A kinase
Background	WEE1 G2 checkpoint kinase(WEE1) Homo sapiens This gene encodes a nuclear protein, which is a tyrosine kinase belonging to the Ser/Thr family of protein kinases. This protein catalyzes the inhibitory tyrosine phosphorylation of CDC2/cyclin B kinase,

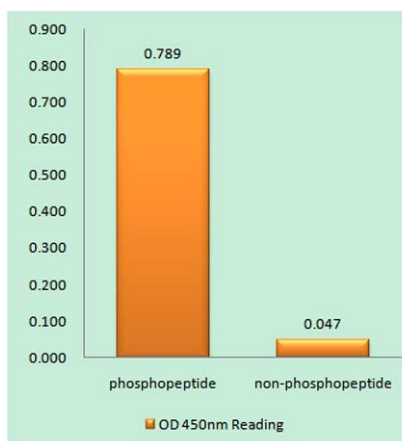




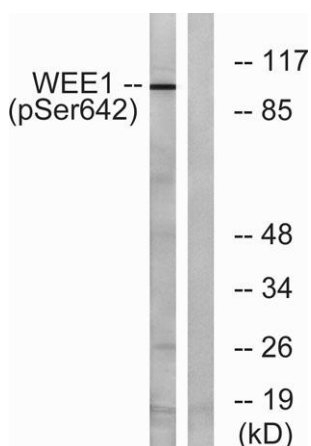
and appears to coordinate the transition between DNA replication and mitosis by protecting the nucleus from cytoplasmically activated CDC2 kinase. [provided by RefSeq, Jul 2008],



Western Blot analysis of 293 cells using Phospho-Wee1 (S642) Polyclonal Antibody cells nucleus extracted by Minute TM Cytoplasmic and Nuclear Fractionation kit (SC-003, Inventbiotech, MN, USA).



Enzyme-Linked Immunosorbent Assay (Phospho-ELISA) for Immunogen Phosphopeptide (Phospho-left) and Non-Phosphopeptide (Phospho-right), using WEE1 (Phospho-Ser642) Antibody



Western blot analysis of lysates from 293 cells treated with etoposide 25uM 60', using WEE1 (Phospho-Ser642) Antibody. The lane on the right is blocked with the phospho peptide.

