



# Ezrin (phospho Thr566) rabbit pAb

Cat No.:ES7500

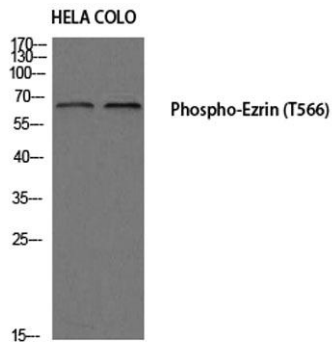
For research use only

## Overview

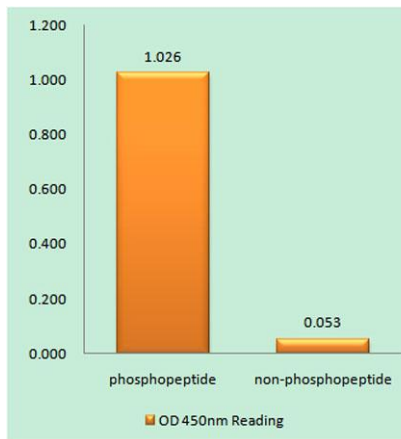
<b>Product Name</b>	Ezrin (phospho Thr566) rabbit pAb
<b>Host species</b>	Rabbit
<b>Applications</b>	WB;ELISA
<b>Species Cross-Reactivity</b>	Human;Mouse;Rat
<b>Recommended dilutions</b>	Western Blot: 1/500 - 1/2000. ELISA: 1/20000. Not yet tested in other applications.
<b>Immunogen</b>	The antiserum was produced against synthesized peptide derived from human Ezrin around the phosphorylation site of Thr566. AA range:534-583
<b>Specificity</b>	Phospho-Ezrin (T566) Polyclonal Antibody detects endogenous levels of Ezrin protein only when phosphorylated at T566.
<b>Formulation</b>	Liquid in PBS containing 50% glycerol, 0.5% BSA and 0.02% sodium azide.
<b>Storage</b>	Store at -20°C. Avoid repeated freeze-thaw cycles.
<b>Protein Name</b>	Ezrin
<b>Gene Name</b>	EZR
<b>Cellular localization</b>	Apical cell membrane ; Peripheral membrane protein ; Cytoplasmic side . Cell projection . Cell projection, microvillus membrane ; Peripheral membrane protein ; Cytoplasmic side . Cell projection, ruffle membrane ; Peripheral membrane protein ; Cytoplasmic
<b>Purification</b>	The antibody was affinity-purified from rabbit antiserum by affinity-chromatography using epitope-specific immunogen.
<b>Clonality</b>	Polyclonal
<b>Concentration</b>	1 mg/ml
<b>Observed band</b>	69kD
<b>Human Gene ID</b>	7430
<b>Human Swiss-Prot Number</b>	P15311
<b>Alternative Names</b>	EZR; VIL2; Ezrin; Cytovillin; Villin-2; p81
<b>Background</b>	The cytoplasmic peripheral membrane protein



encoded by this gene functions as a protein-tyrosine kinase substrate in microvilli. As a member of the ERM protein family, this protein serves as an intermediate between the plasma membrane and the actin cytoskeleton. This protein plays a key role in cell surface structure adhesion, migration and organization, and it has been implicated in various human cancers. A pseudogene located on chromosome 3 has been identified for this gene. Alternatively spliced variants have also been described for this gene. [provided by RefSeq, Jul 2008],



Western blot analysis of HELA COLO using Phospho-Ezrin (T566) antibody. Antibody was diluted at 1:1000

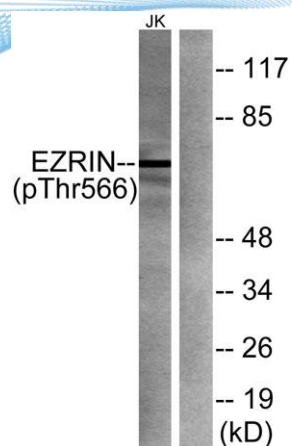


Enzyme-Linked Immunosorbent Assay (Phospho-ELISA) for Immunogen Phosphopeptide (Phospho-left) and Non-Phosphopeptide (Phospho-right), using Ezrin (Phospho-Thr566) Antibody





**ELK Biotechnology**



Western blot analysis of lysates from Jurkat cells treated with PMA 125ng/ml for 30 minutes, using Ezrin (Phospho-Thr566) Antibody. The lane on the right is blocked with the phospho peptide.



+86-27-59760950

[ELKbio@ELKbiotech.com](mailto:ELKbio@ELKbiotech.com)

[www.elkbiotech.com](http://www.elkbiotech.com)

23-2, No.388 Gaoxin 2nd Road, Wuhan East Lake Hi-tech Development Zone, Hubei, P.R.C.