



VCP (phospho Ser352) rabbit pAb

Cat No.:ES7491

For research use only

Overview

Product Name	VCP (phospho Ser352) rabbit pAb
Host species	Rabbit
Applications	WB;ELISA
Species Cross-Reactivity	Human;Mouse;Rat
Recommended dilutions	Western Blot: 1/500 - 1/2000. ELISA: 1/5000. Not yet tested in other applications.
Immunogen	The antiserum was produced against synthesized peptide derived from human VCP around the phosphorylation site of Ser352. AA range:318-367
Specificity	Phospho-VCP (S352) Polyclonal Antibody detects endogenous levels of VCP protein only when phosphorylated at S352.
Formulation	Liquid in PBS containing 50% glycerol, 0.5% BSA and 0.02% sodium azide.
Storage	Store at -20°C. Avoid repeated freeze-thaw cycles.
Protein Name	Transitional endoplasmic reticulum ATPase
Gene Name	VCP
Cellular localization	Cytoplasm, cytosol . Endoplasmic reticulum . Nucleus . Cytoplasm, Stress granule . Present in the neuronal hyaline inclusion bodies specifically found in motor neurons from amyotrophic lateral sclerosis patients (PubMed:15456787). Present in the Lewy bodi
Purification	The antibody was affinity-purified from rabbit antiserum by affinity-chromatography using epitope-specific immunogen.
Clonality	Polyclonal
Concentration	1 mg/ml
Observed band	85kD
Human Gene ID	7415
Human Swiss-Prot Number	P55072
Alternative Names	VCP; Transitional endoplasmic reticulum ATPase; TER ATPase; 15S Mg(2+)-ATPase p97 subunit;



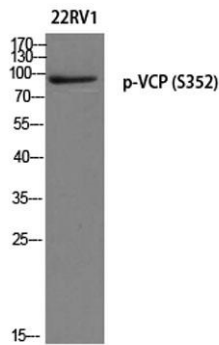


Background

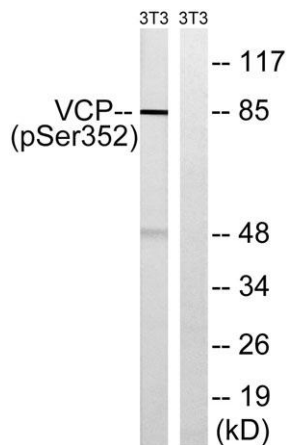
Valosin-containing protein; VCP

valosin containing protein(VCP) Homo sapiens

The protein encoded by this gene is a member of a family that includes putative ATP-binding proteins involved in vesicle transport and fusion, 26S proteasome function, and assembly of peroxisomes. This protein, as a structural protein, is associated with clathrin, and heat-shock protein Hsc70, to form a complex. It has been implicated in a number of cellular events that are regulated during mitosis, including homotypic membrane fusion, spindle pole body function, and ubiquitin-dependent protein degradation. [provided by RefSeq, Jul 2008],



Western blot analysis of 22RV1 using p-VCP (S352) antibody. Antibody was diluted at 1:1000



Western blot analysis of lysates from NIH/3T3 cells treated with starved 24h, using VCP (Phospho-Ser352) Antibody. The lane on the right is blocked with the phospho peptide.

