



# RGPD2/3/4/6/8 rabbit pAb

Cat No.:ES7469

For research use only

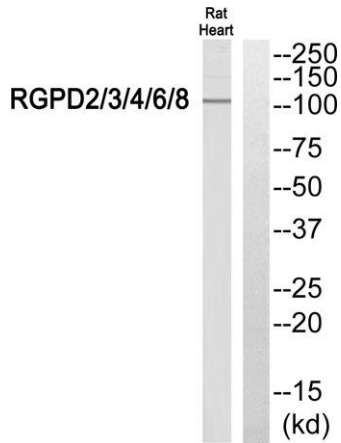
## Overview

<b>Product Name</b>	RGPD2/3/4/6/8 rabbit pAb
<b>Host species</b>	Rabbit
<b>Applications</b>	WB;ELISA;IHC
<b>Species Cross-Reactivity</b>	Human;Rat;Mouse;
<b>Recommended dilutions</b>	WB 1:500-2000;IHC-p 1:50-300; ELISA 2000-20000
<b>Immunogen</b>	The antiserum was produced against synthesized peptide derived from human RGPD2/3/4/6/8. AA range:577-626
<b>Specificity</b>	RGPD2/3/4/6/8 Polyclonal Antibody detects endogenous levels of RGPD2/3/4/6/8 protein.
<b>Formulation</b>	Liquid in PBS containing 50% glycerol, 0.5% BSA and 0.02% sodium azide.
<b>Storage</b>	Store at -20°C. Avoid repeated freeze-thaw cycles.
<b>Protein Name</b>	RANBP2-like and GRIP domain-containing protein 8
<b>Gene Name</b>	RGPD8
<b>Cellular localization</b>	intracellular,nuclear pore,
<b>Purification</b>	The antibody was affinity-purified from rabbit antiserum by affinity-chromatography using epitope-specific immunogen.
<b>Clonality</b>	Polyclonal
<b>Concentration</b>	1 mg/ml
<b>Observed band</b>	110kD
<b>Human Gene ID</b>	729540/84220/729857
<b>Human Swiss-Prot Number</b>	O14715/Q53T03/Q7Z3J3/A6NKT7/POC839
<b>Alternative Names</b>	
<b>Background</b>	caution:The sequence shown here is derived from an Ensembl automatic analysis pipeline and should be considered as preliminary data.,miscellaneous:One of the 8 copies of RANBP2 clustered close to the centromere of chromosome 2.,miscellaneous:One of the 8 copies of RANBP2 clustered close to the chromosome 2 centromere.,similarity:Contains 1 GRIP

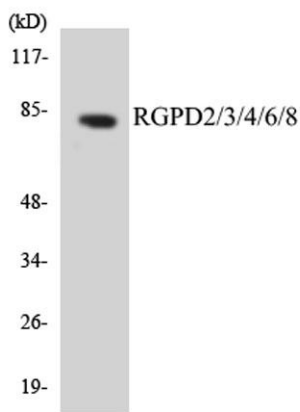




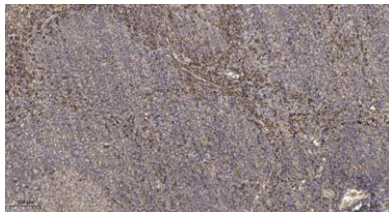
domain.,similarity:Contains 2 RanBD1 domains.,similarity:Contains 2 TPR repeats.,similarity:Contains 3 TPR repeats.,tissue specificity:Expressed in testis.,



Western blot analysis of RGD2/3/4/6/8 Antibody. The lane on the right is blocked with the RGD2/3/4/6/8 peptide.



Western blot analysis of the lysates from Jurkat cells using RGD2/3/4/6/8 antibody.



Immunohistochemical analysis of paraffin-embedded human tonsil. 1, Antibody was diluted at 1:200(4° overnight). 2, Tris-EDTA,pH9.0 was used for antigen retrieval. 3,Secondary antibody was diluted at 1:200(room temperature, 45min).

