



Tuberin (phospho Tyr1571) rabbit pAb

Cat No.:ES7450

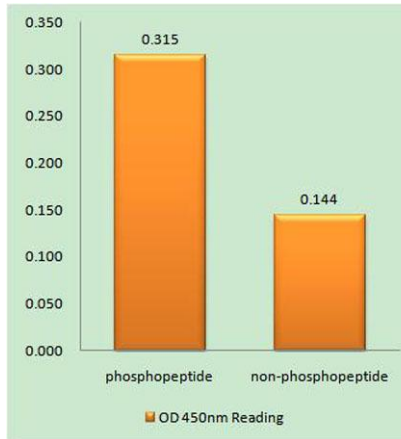
For research use only

Overview

Product Name	Tuberin (phospho Tyr1571) rabbit pAb
Host species	Rabbit
Applications	WB;IHC;IF;ELISA
Species Cross-Reactivity	Human;Mouse;Rat
Recommended dilutions	Western Blot: 1/500 - 1/2000. Immunohistochemistry: 1/100 - 1/300. ELISA: 1/5000. Not yet tested in other applications.
Immunogen	The antiserum was produced against synthesized peptide derived from human TSC2 around the phosphorylation site of Tyr1571. AA range:1537-1586
Specificity	Phospho-Tuberin (Y1571) Polyclonal Antibody detects endogenous levels of Tuberin protein only when phosphorylated at Y1571.
Formulation	Liquid in PBS containing 50% glycerol, 0.5% BSA and 0.02% sodium azide.
Storage	Store at -20°C. Avoid repeated freeze-thaw cycles.
Protein Name	Tuberin
Gene Name	TSC2
Cellular localization	Cytoplasm. Membrane; Peripheral membrane protein. At steady state found in association with membranes.
Purification	The antibody was affinity-purified from rabbit antiserum by affinity-chromatography using epitope-specific immunogen.
Clonality	Polyclonal
Concentration	1 mg/ml
Observed band	170kD
Human Gene ID	7249
Human Swiss-Prot Number	P49815
Alternative Names	TSC2; TSC4; Tuberin; Tuberous sclerosis 2 protein
Background	Mutations in this gene lead to tuberous sclerosis complex. Its gene product is believed to be a tumor

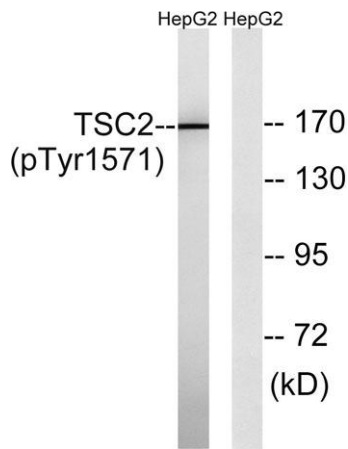
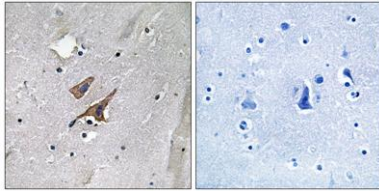


suppressor and is able to stimulate specific GTPases. The protein associates with hamartin in a cytosolic complex, possibly acting as a chaperone for hamartin. Alternative splicing results in multiple transcript variants encoding different isoforms. [provided by RefSeq, Jul 2008],



Enzyme-Linked Immunosorbent Assay (Phospho-ELISA) for Immunogen Phosphopeptide (Phospho-left) and Non-Phosphopeptide (Phospho-right), using TSC2 (Phospho-Tyr1571) Antibody

Immunohistochemistry analysis of paraffin-embedded human brain, using TSC2 (Phospho-Tyr1571) Antibody. The picture on the right is blocked with the phospho peptide.



Western blot analysis of TSC2 (Phospho-Tyr1571) Antibody. The lane on the right is blocked with the TSC2 (Phospho-Tyr1571) peptide.

