



# Tensin-1 rabbit pAb

Cat No.:ES7409

For research use only

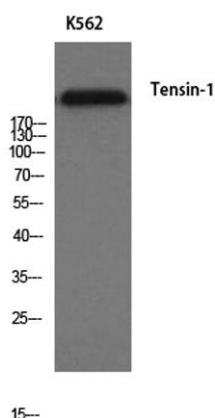
## Overview

<b>Product Name</b>	Tensin-1 rabbit pAb
<b>Host species</b>	Rabbit
<b>Applications</b>	WB;ELISA
<b>Species Cross-Reactivity</b>	Human;Mouse
<b>Recommended dilutions</b>	Western Blot: 1/500 - 1/2000. ELISA: 1/10000. Not yet tested in other applications.
<b>Immunogen</b>	The antiserum was produced against synthesized peptide derived from human Tensin-1. AA range:1273-1322
<b>Specificity</b>	Tensin-1 Polyclonal Antibody detects endogenous levels of Tensin-1 protein.
<b>Formulation</b>	Liquid in PBS containing 50% glycerol, 0.5% BSA and 0.02% sodium azide.
<b>Storage</b>	Store at -20°C. Avoid repeated freeze-thaw cycles.
<b>Protein Name</b>	Tensin-1
<b>Gene Name</b>	TNS1
<b>Cellular localization</b>	Cell surface . Cell junction, focal adhesion . Cytoplasm, cytoskeleton . Localized at cell periphery preferentially to fibrillar adhesions than focal adhesions. Translocates from the cell edge to cell center in an ITGB1BP1-dependent manner.
<b>Purification</b>	The antibody was affinity-purified from rabbit antiserum by affinity-chromatography using epitope-specific immunogen.
<b>Clonality</b>	Polyclonal
<b>Concentration</b>	1 mg/ml
<b>Observed band</b>	200kD
<b>Human Gene ID</b>	7145
<b>Human Swiss-Prot Number</b>	Q9HBL0
<b>Alternative Names</b>	TNS1; TNS; Tensin-1
<b>Background</b>	The protein encoded by this gene localizes to focal adhesions, regions of the plasma membrane where the cell attaches to the extracellular matrix. This





protein crosslinks actin filaments and contains a Src homology 2 (SH2) domain, which is often found in molecules involved in signal transduction. This protein is a substrate of calpain II. Alternative splicing results in multiple transcript variants encoding different isoforms. [provided by RefSeq, Apr 2015],



Western Blot analysis of K562 cells using Tensin-1 Polyclonal Antibody



Western blot analysis of lysate from K562 cells, using Tensin-1 antibody.

