



# Claudin-5 (phospho Tyr217) rabbit pAb

Cat No.:ES7400

For research use only

## Overview

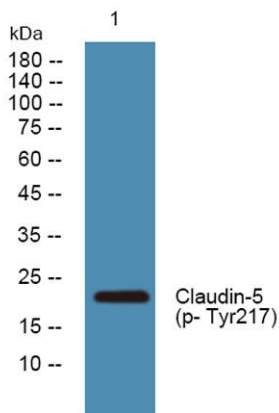
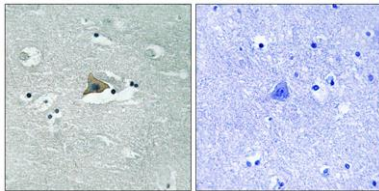
<b>Product Name</b>	Claudin-5 (phospho Tyr217) rabbit pAb
<b>Host species</b>	Rabbit
<b>Applications</b>	IHC;IF;WB;ELISA
<b>Species Cross-Reactivity</b>	Human;Mouse;Rat
<b>Recommended dilutions</b>	WB 1:500-2000 Immunohistochemistry: 1/100 - 1/300. ELISA: 1/5000. Not yet tested in other applications.
<b>Immunogen</b>	The antiserum was produced against synthesized peptide derived from human Claudin 5 around the phosphorylation site of Tyr217. AA range:169-218
<b>Specificity</b>	Phospho-Claudin-5 (Y217) Polyclonal Antibody detects endogenous levels of Claudin-5 protein only when phosphorylated at Y217.
<b>Formulation</b>	Liquid in PBS containing 50% glycerol, 0.5% BSA and 0.02% sodium azide.
<b>Storage</b>	Store at -20°C. Avoid repeated freeze-thaw cycles.
<b>Protein Name</b>	Claudin-5
<b>Gene Name</b>	CLDN5
<b>Cellular localization</b>	Cell junction, tight junction. Cell membrane; Multi-pass membrane protein.
<b>Purification</b>	The antibody was affinity-purified from rabbit antiserum by affinity-chromatography using epitope-specific immunogen.
<b>Clonality</b>	Polyclonal
<b>Concentration</b>	1 mg/ml
<b>Observed band</b>	23kD
<b>Human Gene ID</b>	7122
<b>Human Swiss-Prot Number</b>	O00501
<b>Alternative Names</b>	CLDN5; AWAL; TMVCF; Claudin-5; Transmembrane protein deleted in VCFS; TMDVCF
<b>Background</b>	This gene encodes a member of the claudin family. Claudins are integral membrane proteins and components of tight junction strands. Tight junction





strands serve as a physical barrier to prevent solutes and water from passing freely through the paracellular space between epithelial or endothelial cell sheets. Mutations in this gene have been found in patients with velocardiofacial syndrome. Alternatively spliced transcript variants encoding the same protein have been found for this gene. [provided by RefSeq, Aug 2008],

Immunohistochemistry analysis of paraffin-embedded human brain, using Claudin 5 (Phospho-Tyr217) Antibody. The picture on the right is blocked with the phospho peptide.



Western blot analysis of lysates from HCT116 cells, primary antibody was diluted at 1:1000, 4° over night

