



TGFβ RII (phospho Ser225) rabbit pAb

Cat No.:ES7379

For research use only

Overview

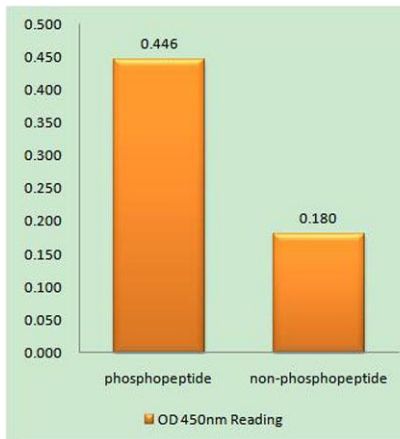
Product Name	TGFβ RII (phospho Ser225) rabbit pAb
Host species	Rabbit
Applications	IHC;IF;ELISA
Species Cross-Reactivity	Human;Mouse
Recommended dilutions	WB 1:500-2000 ,Immunohistochemistry: 1/100 - 1/300. ELISA: 1/10000. Not yet tested in other applications.
Immunogen	The antiserum was produced against synthesized peptide derived from human TGF beta Receptor II around the phosphorylation site of Ser225/250. AA range:191-240
Specificity	Phospho-TGFβ RII (S225) Polyclonal Antibody detects endogenous levels of TGFβ RII protein only when phosphorylated at S225.
Formulation	Liquid in PBS containing 50% glycerol, 0.5% BSA and 0.02% sodium azide.
Storage	Store at -20°C. Avoid repeated freeze-thaw cycles.
Protein Name	TGF-beta receptor type-2
Gene Name	TGFBR2
Cellular localization	Cell membrane ; Single-pass type I membrane protein . Membrane raft .; [Isoform 3]: Secreted .
Purification	The antibody was affinity-purified from rabbit antiserum by affinity-chromatography using epitope-specific immunogen.
Clonality	Polyclonal
Concentration	1 mg/ml
Observed band	75kD
Human Gene ID	7048
Human Swiss-Prot Number	P37173
Alternative Names	TGFBR2; TGF-beta receptor type-2; TGFR-2; TGF-beta type II receptor; Transforming growth factor-beta receptor type II; TGF-beta receptor type II; TbetaR-II





Background

This gene encodes a member of the Ser/Thr protein kinase family and the TGF β receptor subfamily. The encoded protein is a transmembrane protein that has a protein kinase domain, forms a heterodimeric complex with another receptor protein, and binds TGF- β . This receptor/ligand complex phosphorylates proteins, which then enter the nucleus and regulate the transcription of a subset of genes related to cell proliferation. Mutations in this gene have been associated with Marfan Syndrome, Loeys-Deitz Aortic Aneurysm Syndrome, and the development of various types of tumors. Alternatively spliced transcript variants encoding different isoforms have been characterized. [provided by RefSeq, Jul 2008],



Enzyme-Linked Immunosorbent Assay (Phospho-ELISA) for Immunogen Phosphopeptide (Phospho-left) and Non-Phosphopeptide (Phospho-right), using TGF β Receptor II (Phospho-Ser225/250) Antibody

Immunohistochemistry analysis of paraffin-embedded human brain, using TGF β Receptor II (Phospho-Ser225/250) Antibody. The picture on the right is blocked with the phospho peptide.

