



TAT rabbit pAb

Cat No.:ES7344

For research use only

Overview

Product Name	TAT rabbit pAb
Host species	Rabbit
Applications	IHC;IF;ELISA
Species Cross-Reactivity	Human;Mouse;Rat
Recommended dilutions	Immunohistochemistry: 1/100 - 1/300. ELISA: 1/40000. Not yet tested in other applications.
Immunogen	The antiserum was produced against synthesized peptide derived from human TAT. AA range:255-304
Specificity	TAT Polyclonal Antibody detects endogenous levels of TAT protein.
Formulation	Liquid in PBS containing 50% glycerol, 0.5% BSA and 0.02% sodium azide.
Storage	Store at -20°C. Avoid repeated freeze-thaw cycles.
Protein Name	Tyrosine aminotransferase
Gene Name	TAT
Cellular localization	mitochondrion,cytosol,
Purification	The antibody was affinity-purified from rabbit antiserum by affinity-chromatography using epitope-specific immunogen.
Clonality	Polyclonal
Concentration	1 mg/ml
Observed band	
Human Gene ID	6898
Human Swiss-Prot Number	P17735
Alternative Names	TAT; Tyrosine aminotransferase; TAT; L-tyrosine:2-oxoglutarate aminotransferase
Background	This nuclear gene encodes a mitochondrial protein tyrosine aminotransferase which is present in the liver and catalyzes the conversion of L-tyrosine into p-hydroxyphenylpyruvate. Mutations in this gene cause tyrosinemia (type II, Richner-Hanhart syndrome), a disorder accompanied by major skin and corneal lesions, with possible mental

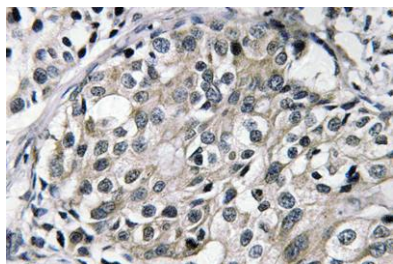




ELK Biotechnology

retardation. A regulator gene for tyrosine aminotransferase is X-linked. [provided by RefSeq, Jul 2008],

Immunohistochemistry analysis of TAT antibody in paraffin-embedded human breast carcinoma tissue.



+86-27-59760950

ELKbio@ELKbiotech.com

www.elkbiotech.com

23-2, No.388 Gaoxin 2nd Road, Wuhan East Lake Hi-tech Development Zone, Hubei, P.R.C