



# Krs-1/2 (phospho Thr183) rabbit pAb

Cat No.:ES7306

For research use only

## Overview

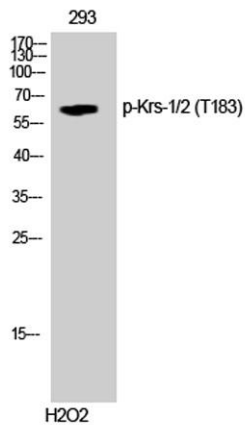
|                                 |                                                                                                                                                                                                                      |
|---------------------------------|----------------------------------------------------------------------------------------------------------------------------------------------------------------------------------------------------------------------|
| <b>Product Name</b>             | Krs-1/2 (phospho Thr183) rabbit pAb                                                                                                                                                                                  |
| <b>Host species</b>             | Rabbit                                                                                                                                                                                                               |
| <b>Applications</b>             | WB;IHC;IF;ELISA                                                                                                                                                                                                      |
| <b>Species Cross-Reactivity</b> | Human;Mouse                                                                                                                                                                                                          |
| <b>Recommended dilutions</b>    | Western Blot: 1/500 - 1/2000.<br>Immunohistochemistry: 1/100 - 1/300. ELISA:<br>1/40000. Not yet tested in other applications.                                                                                       |
| <b>Immunogen</b>                | The antiserum was produced against synthesized peptide derived from human Mst1/2 around the phosphorylation site of Thr183. AA range:149-198                                                                         |
| <b>Specificity</b>              | Phospho-Krs-1/2 (T183) Polyclonal Antibody detects endogenous levels of Krs-1/2 protein only when phosphorylated at T183.                                                                                            |
| <b>Formulation</b>              | Liquid in PBS containing 50% glycerol, 0.5% BSA and 0.02% sodium azide.                                                                                                                                              |
| <b>Storage</b>                  | Store at -20°C. Avoid repeated freeze-thaw cycles.                                                                                                                                                                   |
| <b>Protein Name</b>             | Serine/threonine-protein kinase 3/4                                                                                                                                                                                  |
| <b>Gene Name</b>                | STK3/STK4                                                                                                                                                                                                            |
| <b>Cellular localization</b>    | Cytoplasm . Nucleus . The caspase-cleaved form cycles between nucleus and cytoplasm (PubMed:19525978, PubMed:11278283). Phosphorylation at Thr-117 leads to inhibition of nuclear translocation (PubMed:19525978). . |
| <b>Purification</b>             | The antibody was affinity-purified from rabbit antiserum by affinity-chromatography using epitope-specific immunogen.                                                                                                |
| <b>Clonality</b>                | Polyclonal                                                                                                                                                                                                           |
| <b>Concentration</b>            | 1 mg/ml                                                                                                                                                                                                              |
| <b>Observed band</b>            | 60kD                                                                                                                                                                                                                 |
| <b>Human Gene ID</b>            | 6789                                                                                                                                                                                                                 |
| <b>Human Swiss-Prot Number</b>  | Q13188/Q13043                                                                                                                                                                                                        |
| <b>Alternative Names</b>        | STK3; KRS1; MST2; Serine/threonine-protein kinase 3; Mammalian STE20-like protein kinase 2; MST-2;                                                                                                                   |



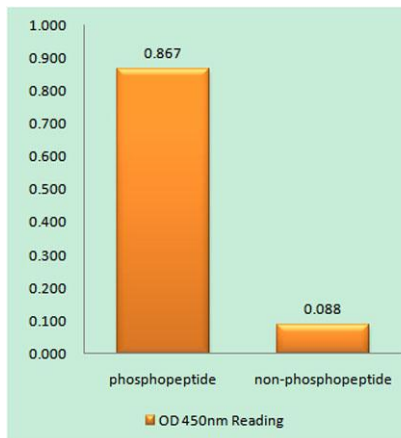


## Background

STE20-like kinase MST2; Serine/threonine-protein kinase Krs-1; STK4; KRS2; MST1; Serine/threonine-protein kinase 4; Mammalian STE20-like prot serine/threonine kinase 3(STK3) Homo sapiens This gene encodes a serine/threonine protein kinase activated by proapoptotic molecules indicating the encoded protein functions as a growth suppressor. Cleavage of the protein product by caspase removes the inhibitory C-terminal portion. The N-terminal portion is transported to the nucleus where it homodimerizes to form the active kinase which promotes the condensation of chromatin during apoptosis. Multiple transcript variants encoding different isoforms have been found for this gene. [provided by RefSeq, Jan 2012],



Western Blot analysis of 293 cells using Phospho-Krs-1/2 (T183) Polyclonal Antibody

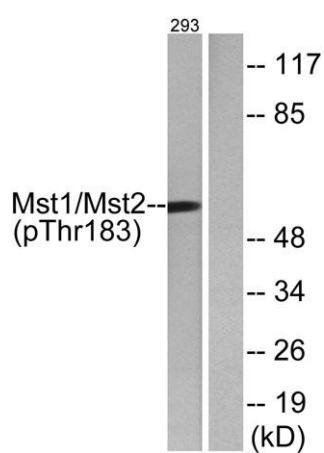
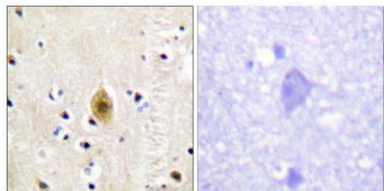


Enzyme-Linked Immunosorbent Assay (Phospho-ELISA) for Immunogen Phosphopeptide (Phospho-left) and Non-Phosphopeptide (Phospho-right), using Mst1/2 (Phospho-Thr183) Antibody





Immunohistochemistry analysis of paraffin-embedded human brain, using Mst1/2 (Phospho-Thr183) Antibody. The picture on the right is blocked with the phospho peptide.



Western blot analysis of lysates from 293 cells treated with H<sub>2</sub>O<sub>2</sub> 100uM 15', using Mst1/2 (Phospho-Thr183) Antibody. The lane on the right is blocked with the phospho peptide.

