



Stat5a (phospho Ser780) rabbit pAb

Cat No.:ES7299

For research use only

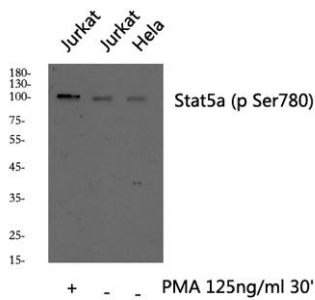
Overview

Product Name	Stat5a (phospho Ser780) rabbit pAb
Host species	Rabbit
Applications	WB;IHC;IF;IP;ELISA
Species Cross-Reactivity	Human;Mouse;Rat
Recommended dilutions	Western Blot: 1/500 - 1/2000. Immunohistochemistry: 1/100 - 1/300. Immunoprecipitation: 2-5 ug/mg lysate. ELISA: 1/10000. Not yet tested in other applications.
Immunogen	The antiserum was produced against synthesized peptide derived from human STAT5A around the phosphorylation site of Ser780. AA range:745-794
Specificity	Phospho-Stat5a (S780) Polyclonal Antibody detects endogenous levels of Stat5a protein only when phosphorylated at S780.
Formulation	Liquid in PBS containing 50% glycerol, 0.5% BSA and 0.02% sodium azide.
Storage	Store at -20°C. Avoid repeated freeze-thaw cycles.
Protein Name	Signal transducer and activator of transcription 5A
Gene Name	STAT5A
Cellular localization	Cytoplasm . Nucleus . Translocated into the nucleus in response to phosphorylation.
Purification	The antibody was affinity-purified from rabbit antiserum by affinity-chromatography using epitope-specific immunogen.
Clonality	Polyclonal
Concentration	1 mg/ml
Observed band	91kD
Human Gene ID	6776
Human Swiss-Prot Number	P42229
Alternative Names	STAT5A; STAT5; Signal transducer and activator of transcription 5A
Background	The protein encoded by this gene is a member of the STAT family of transcription factors. In response



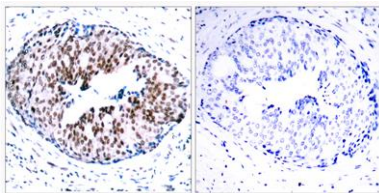


to cytokines and growth factors, STAT family members are phosphorylated by the receptor associated kinases, and then form homo- or heterodimers that translocate to the cell nucleus where they act as transcription activators. This protein is activated by, and mediates the responses of many cell ligands, such as IL2, IL3, IL7 GM-CSF, erythropoietin, thrombopoietin, and different growth hormones. Activation of this protein in myeloma and lymphoma associated with a TEL/JAK2 gene fusion is independent of cell stimulus and has been shown to be essential for tumorigenesis. The mouse counterpart of this gene is found to induce the expression of BCL2L1/BCL-X(L), which suggests the antiapoptotic function of this gene in cells. Alternatively spliced transcript variants have been



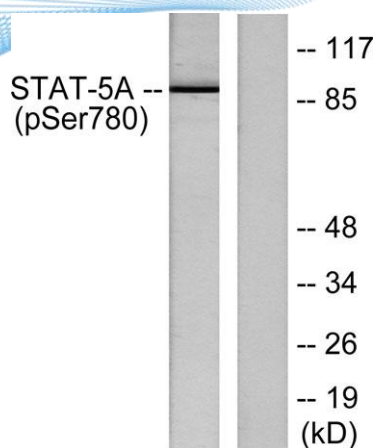
Western blot analysis of Stat5a (phospho Ser780) Polyclonal Antibody, using HeLa, Jurkat cell treated or untreated with PMA 125ng/ml 30', 4° over night, secondary antibody (cat: RS0002 was diluted at 1:10000, 37° 1hour).

Immunohistochemistry analysis of paraffin-embedded human breast carcinoma, using STAT5A (Phospho-Ser780) Antibody. The picture on the right is blocked with the phospho peptide.





ELK Biotechnology



Western blot analysis of lysates from HeLa cells, using STAT5A (Phospho-Ser780) Antibody. The lane on the right is blocked with the phospho peptide.



+86-27-59760950

ELKbio@ELKbiotech.com

www.elkbiotech.com

23-2, No.388 Gaoxin 2nd Road, Wuhan East Lake Hi-tech Development Zone, Hubei, P.R.C