



# Stat4 (phospho Tyr693) rabbit pAb

Cat No.:ES7297

For research use only

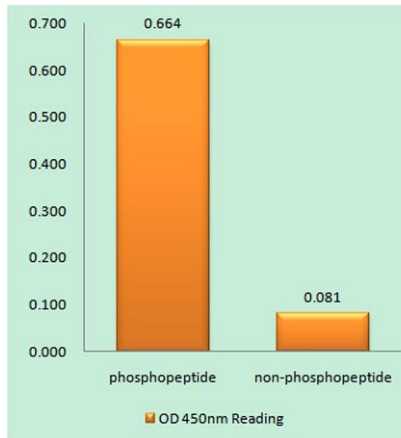
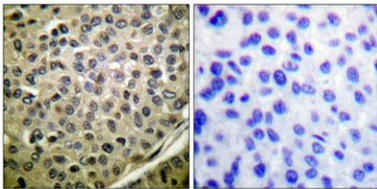
## Overview

<b>Product Name</b>	Stat4 (phospho Tyr693) rabbit pAb
<b>Host species</b>	Rabbit
<b>Applications</b>	WB;IHC;IF;ELISA
<b>Species Cross-Reactivity</b>	Human;Mouse;Rat
<b>Recommended dilutions</b>	Western Blot: 1/500 - 1/2000. Immunohistochemistry: 1/100 - 1/300. ELISA: 1/20000. Not yet tested in other applications.
<b>Immunogen</b>	Synthesized phospho-peptide around the phosphorylation site of human Stat4 (phospho Tyr693)
<b>Specificity</b>	Phospho-Stat4 (Y693) Polyclonal Antibody detects endogenous levels of Stat4 protein only when phosphorylated at Y693.
<b>Formulation</b>	Liquid in PBS containing 50% glycerol, 0.5% BSA and 0.02% sodium azide.
<b>Storage</b>	Store at -20°C. Avoid repeated freeze-thaw cycles.
<b>Protein Name</b>	Signal transducer and activator of transcription 4
<b>Gene Name</b>	STAT4
<b>Cellular localization</b>	Cytoplasm. Nucleus. Translocated into the nucleus in response to phosphorylation.
<b>Purification</b>	The antibody was affinity-purified from rabbit antiserum by affinity-chromatography using epitope-specific immunogen.
<b>Clonality</b>	Polyclonal
<b>Concentration</b>	1 mg/ml
<b>Observed band</b>	85kD
<b>Human Gene ID</b>	6775
<b>Human Swiss-Prot Number</b>	Q14765
<b>Alternative Names</b>	STAT4; Signal transducer and activator of transcription 4
<b>Background</b>	The protein encoded by this gene is a member of the STAT family of transcription factors. In response to cytokines and growth factors, STAT family



members are phosphorylated by the receptor associated kinases, and then form homo- or heterodimers that translocate to the cell nucleus where they act as transcription activators. This protein is essential for mediating responses to IL12 in lymphocytes, and regulating the differentiation of T helper cells. Mutations in this gene may be associated with systemic lupus erythematosus and rheumatoid arthritis. Alternate splicing results in multiple transcript variants that encode the same protein. [provided by RefSeq, Aug 2011],

Immunohistochemical analysis of paraffin-embedded Human breast cancer. Antibody was diluted at 1:100(4° overnight). High-pressure and temperature Tris-EDTA,pH8.0 was used for antigen retrieval. Negative contrl (right) obtained from antibody was pre-absorb



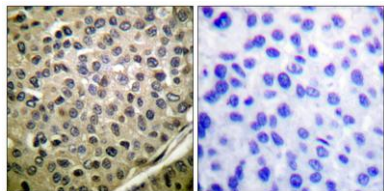
Enzyme-Linked Immunosorbent Assay (Phospho-ELISA) for Immunogen Phosphopeptide (Phospho-left) and Non-Phosphopeptide (Phospho-right), using STAT4 (Phospho-Tyr693) Antibody





**ELK Biotechnology**

Immunohistochemistry analysis of paraffin-embedded human breast cancer, using STAT4 (Phospho-Tyr693) Antibody. The picture on the right is blocked with the STAT4 (Phospho-Tyr693) peptide.



+86-27-59760950

[ELKbio@ELKbiotech.com](mailto:ELKbio@ELKbiotech.com)

[www.elkbiotech.com](http://www.elkbiotech.com)

23-2, No.388 Gaoxin 2nd Road, Wuhan East Lake Hi-tech Development Zone, Hubei, P.R.C