



BRCA2 rabbit pAb

Cat No.:ES7290

For research use only

Overview

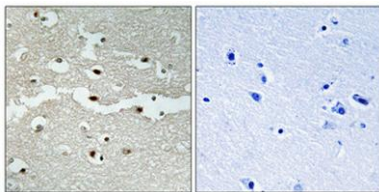
Product Name	BRCA2 rabbit pAb
Host species	Rabbit
Applications	IHC;IF;ELISA
Species Cross-Reactivity	Human;Rat
Recommended dilutions	Immunohistochemistry: 1/100 - 1/300. ELISA: 1/20000. Not yet tested in other applications.
Immunogen	The antiserum was produced against synthesized peptide derived from human BRCA2. AA range:31-80
Specificity	BRCA2 Polyclonal Antibody detects endogenous levels of BRCA2 protein.
Formulation	Liquid in PBS containing 50% glycerol, 0.5% BSA and 0.02% sodium azide.
Storage	Store at -20°C. Avoid repeated freeze-thaw cycles.
Protein Name	Breast cancer type 2 susceptibility protein
Gene Name	BRCA2
Cellular localization	Nucleus . Cytoplasm, cytoskeleton, microtubule organizing center, centrosome . Colocalizes with ERCC5/XPG to nuclear foci following DNA replication stress. .
Purification	The antibody was affinity-purified from rabbit antiserum by affinity-chromatography using epitope-specific immunogen.
Clonality	Polyclonal
Concentration	1 mg/ml
Observed band	
Human Gene ID	675
Human Swiss-Prot Number	P51587
Alternative Names	BRCA2; FACD; FANCD1; Breast cancer type 2 susceptibility protein; Fanconi anemia group D1 protein
Background	Inherited mutations in BRCA1 and this gene, BRCA2, confer increased lifetime risk of developing breast or





ovarian cancer. Both BRCA1 and BRCA2 are involved in maintenance of genome stability, specifically the homologous recombination pathway for double-strand DNA repair. The BRCA2 protein contains several copies of a 70 aa motif called the BRC motif, and these motifs mediate binding to the RAD51 recombinase which functions in DNA repair. BRCA2 is considered a tumor suppressor gene, as tumors with BRCA2 mutations generally exhibit loss of heterozygosity (LOH) of the wild-type allele. [provided by RefSeq, Dec 2008],

Immunohistochemical analysis of paraffin-embedded Human brain. Antibody was diluted at 1:100(4° overnight). High-pressure and temperature Tris-EDTA,pH8.0 was used for antigen retrieval. Negative contrl (right) obtained from antibody was pre-absorbed by i



Immunohistochemistry analysis of paraffin-embedded human brain tissue, using BRCA2 Antibody. The picture on the right is blocked with the synthesized peptide.

