



Synuclein- α (phospho Tyr136) rabbit pAb

Cat No.:ES7249

For research use only

Overview

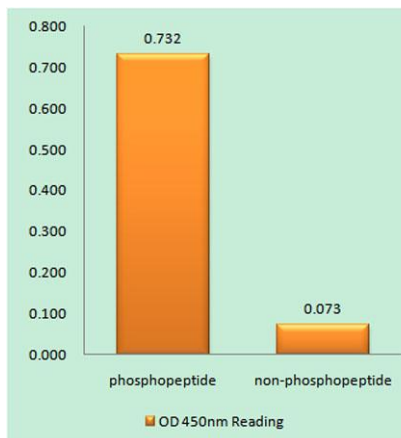
Product Name	Synuclein- α (phospho Tyr136) rabbit pAb
Host species	Rabbit
Applications	WB;ELISA
Species Cross-Reactivity	Human;Mouse;Rat
Recommended dilutions	Western Blot: 1/500 - 1/2000. ELISA: 1/5000. Not yet tested in other applications.
Immunogen	The antiserum was produced against synthesized peptide derived from human Synuclein-alpha around the phosphorylation site of Tyr136. AA range:91-140
Specificity	Phospho-Synuclein- α (Y136) Polyclonal Antibody detects endogenous levels of Synuclein- α protein only when phosphorylated at Y136.
Formulation	Liquid in PBS containing 50% glycerol, 0.5% BSA and 0.02% sodium azide.
Storage	Store at -20°C. Avoid repeated freeze-thaw cycles.
Protein Name	Alpha-synuclein
Gene Name	SNCA
Cellular localization	Cytoplasm . Membrane . Nucleus . Cell junction, synapse . Secreted . Cell projection, axon . Membrane-bound in dopaminergic neurons (PubMed:15282274). Expressed and colocalized with SEPTIN4 in dopaminergic axon terminals, especially at the varicosities (B
Purification	The antibody was affinity-purified from rabbit antiserum by affinity-chromatography using epitope-specific immunogen.
Clonality	Polyclonal
Concentration	1 mg/ml
Observed band	15kD
Human Gene ID	6622
Human Swiss-Prot Number	P37840
Alternative Names	SNCA; NACP; PARK1; Alpha-synuclein; Non-A beta



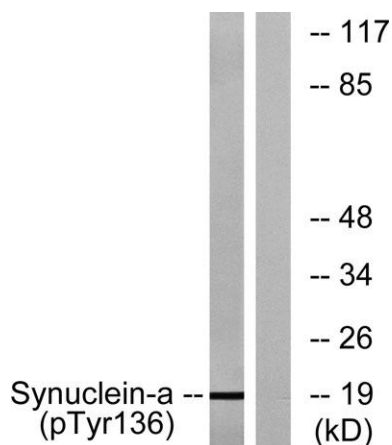
Background

component of AD amyloid; Non-A4 component of amyloid precursor; NACP

Alpha-synuclein is a member of the synuclein family, which also includes beta- and gamma-synuclein. Synucleins are abundantly expressed in the brain and alpha- and beta-synuclein inhibit phospholipase D2 selectively. SNCA may serve to integrate presynaptic signaling and membrane trafficking. Defects in SNCA have been implicated in the pathogenesis of Parkinson disease. SNCA peptides are a major component of amyloid plaques in the brains of patients with Alzheimer's disease. Alternatively spliced transcripts encoding different isoforms have been identified for this gene. [provided by RefSeq, Feb 2016],



Enzyme-Linked Immunosorbent Assay (Phospho-ELISA) for Immunogen Phosphopeptide (Phospho-left) and Non-Phosphopeptide (Phospho-right), using Synuclein-alpha (Phospho-Tyr136) Antibody



Western blot analysis of lysates from mouse brain, using Synuclein-alpha (Phospho-Tyr136) Antibody. The lane on the right is blocked with the phospho peptide.

