



PHACTR4 rabbit pAb

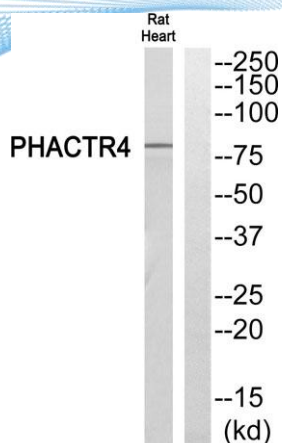
Cat No.:ES7239

For research use only

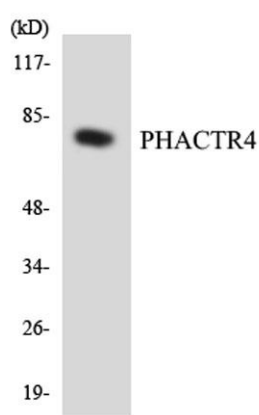
Overview

Product Name	PHACTR4 rabbit pAb
Host species	Rabbit
Applications	WB;ELISA;IHC
Species Cross-Reactivity	Human;Rat;Mouse;
Recommended dilutions	WB 1:500-2000;IHC-p 1:50-300; ELISA 2000-20000
Immunogen	The antiserum was produced against synthesized peptide derived from human PHACTR4. AA range:363-412
Specificity	PHACTR4 Polyclonal Antibody detects endogenous levels of PHACTR4 protein.
Formulation	Liquid in PBS containing 50% glycerol, 0.5% BSA and 0.02% sodium azide.
Storage	Store at -20°C. Avoid repeated freeze-thaw cycles.
Protein Name	Phosphatase and actin regulator 4
Gene Name	PHACTR4
Cellular localization	Cytoplasm . Cell projection, lamellipodium .
Purification	The antibody was affinity-purified from rabbit antiserum by affinity-chromatography using epitope-specific immunogen.
Clonality	Polyclonal
Concentration	1 mg/ml
Observed band	80kD
Human Gene ID	65979
Human Swiss-Prot Number	Q8IZ21
Alternative Names	PHACTR4; Phosphatase and actin regulator 4
Background	This gene encodes a member of the phosphatase and actin regulator (PHACTR) family. Other PHACTR family members have been shown to inhibit protein phosphatase 1 (PP1) activity, and the homolog of this gene in the mouse has been shown to interact with actin and PP1. Multiple transcript variants encoding different isoforms have been found for this gene. [provided by RefSeq, Jul 2008],

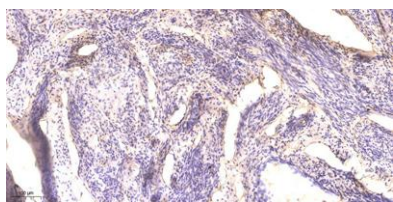




Western blot analysis of PHACTR4 Antibody. The lane on the right is blocked with the PHACTR4 peptide.



Western blot analysis of the lysates from HeLa cells using PHACTR4 antibody.



Immunohistochemical analysis of paraffin-embedded human cervical carcinoma. 1, Antibody was diluted at 1:200(4° overnight). 2, Tris-EDTA,pH9.0 was used for antigen retrieval. 3,Secondary antibody was diluted at 1:200(room temperature, 45min).

