



p47-phox (phospho Ser359) rabbit pAb

Cat No.:ES7222

For research use only

Overview

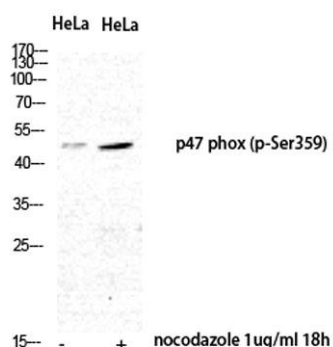
Product Name	p47-phox (phospho Ser359) rabbit pAb
Host species	Rabbit
Applications	WB;IHC;IF;ELISA
Species Cross-Reactivity	Human;Rat;Mouse;
Recommended dilutions	Western Blot: 1/500 - 1/2000. Immunohistochemistry: 1/100 - 1/300. Immunofluorescence: 1/200 - 1/1000. ELISA: 1/5000. Not yet tested in other applications.
Immunogen	The antiserum was produced against synthesized peptide derived from human p47 phox around the phosphorylation site of Ser359. AA range:331-380
Specificity	Phospho-p47-phox (S359) Polyclonal Antibody detects endogenous levels of p47-phox protein only when phosphorylated at S359.
Formulation	Liquid in PBS containing 50% glycerol, 0.5% BSA and 0.02% sodium azide.
Storage	Store at -20°C. Avoid repeated freeze-thaw cycles.
Protein Name	Neutrophil cytosol factor 1
Gene Name	NCF1
Cellular localization	Cytoplasm, cytosol . Membrane ; Peripheral membrane protein ; Cytoplasmic side .
Purification	The antibody was affinity-purified from rabbit antiserum by affinity-chromatography using epitope-specific immunogen.
Clonality	Polyclonal
Concentration	1 mg/ml
Observed band	45kD
Human Gene ID	653361
Human Swiss-Prot Number	P14598
Alternative Names	NCF1; NOXO2; SH3PXD1A; Neutrophil cytosol factor 1; NCF-1; 47 kDa autosomal chronic granulomatous disease protein; 47 kDa neutrophil oxidase factor; NCF-47K; Neutrophil NADPH oxidase factor 1; Nox



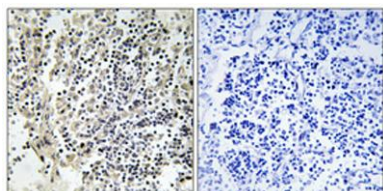


Background

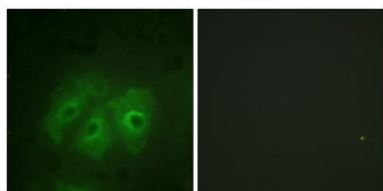
organizer 2; Nox-organizing protein 2; SH3
The protein encoded by this gene is a 47 kDa cytosolic subunit of neutrophil NADPH oxidase. This oxidase is a multicomponent enzyme that is activated to produce superoxide anion. Mutations in this gene have been associated with chronic granulomatous disease. [provided by RefSeq, Jul 2008],



Western Blot analysis of HeLa nocodazole 1ug/ml 18h cells using Phospho-p47-phox (S359) Polyclonal Antibody diluted at 1:500



Immunohistochemical analysis of paraffin-embedded Human lung cancer. Antibody was diluted at 1:100(4° overnight). High-pressure and temperature Tris-EDTA,pH8.0 was used for antigen retrieval. Negative contrl (right) obtaned from antibody was pre-absorbed by immunogen peptide.



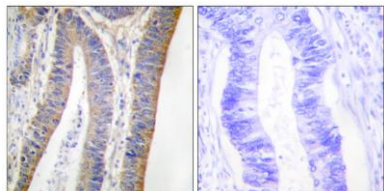
Immunofluorescence analysis of HeLa cells, using p47 phox (Phospho-Ser359) Antibody. The picture on the right is blocked with the phospho peptide.





ELK Biotechnology

Immunohistochemistry analysis of paraffin-embedded human colon carcinoma, using p47 phox (Phospho-Ser359) Antibody. The picture on the right is blocked with the phospho peptide.



+86-27-59760950

ELKbio@ELKbiotech.com

www.elkbiotech.com

23-2, No.388 Gaoxin 2nd Road, Wuhan East Lake Hi-tech Development Zone, Hubei, P.R.C.