



# TAUT rabbit pAb

Cat No.:ES7219

For research use only

## Overview

<b>Product Name</b>	TAUT rabbit pAb
<b>Host species</b>	Rabbit
<b>Applications</b>	WB;IHC;IF;ELISA
<b>Species Cross-Reactivity</b>	Human;Mouse;Rat
<b>Recommended dilutions</b>	Western Blot: 1/500 - 1/2000. Immunohistochemistry: 1/100 - 1/300. ELISA: 1/40000. Not yet tested in other applications.
<b>Immunogen</b>	The antiserum was produced against synthesized peptide derived from human SLC6A6. AA range:561-610
<b>Specificity</b>	TAUT Polyclonal Antibody detects endogenous levels of TAUT protein.
<b>Formulation</b>	Liquid in PBS containing 50% glycerol, 0.5% BSA and 0.02% sodium azide.
<b>Storage</b>	Store at -20°C. Avoid repeated freeze-thaw cycles.
<b>Protein Name</b>	Sodium- and chloride-dependent taurine transporter
<b>Gene Name</b>	SLC6A6
<b>Cellular localization</b>	Cell membrane ; Multi-pass membrane protein .
<b>Purification</b>	The antibody was affinity-purified from rabbit antiserum by affinity-chromatography using epitope-specific immunogen.
<b>Clonality</b>	Polyclonal
<b>Concentration</b>	1 mg/ml
<b>Observed band</b>	70kD
<b>Human Gene ID</b>	6533
<b>Human Swiss-Prot Number</b>	P31641
<b>Alternative Names</b>	SLC6A6; Sodium- and chloride-dependent taurine transporter; Solute carrier family 6 member 6
<b>Background</b>	This gene encodes a multi-pass membrane protein that is a member of a family of sodium and chloride-ion dependent transporters. The encoded protein transports taurine and beta-alanine. There is

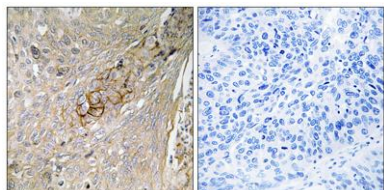




**ELK Biotechnology**

a pseudogene for this gene on chromosome 21.  
Alternative splicing results in multiple transcript  
variants. [provided by RefSeq, May 2013],

Immunohistochemistry analysis of paraffin-embedded  
human lung carcinoma tissue, using SLC6A6 Antibody. The  
picture on the right is blocked with the synthesized  
peptide.



+86-27-59760950

ELKbio@ELKbiotech.com

www.elkbiotech.com

23-2, No.388 Gaoxin 2nd Road,Wuhan East Lake Hi-tech Development Zone, Hubei , P.R.C