



Glut3 rabbit pAb

Cat No.:ES7215

For research use only

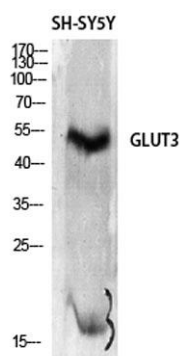
Overview

| | |
|---------------------------------|--|
| Product Name | Glut3 rabbit pAb |
| Host species | Rabbit |
| Applications | WB;IHC;IF;ELISA |
| Species Cross-Reactivity | Human;Rat;Mouse; |
| Recommended dilutions | Western Blot: 1/500 - 1/2000. Immunohistochemistry: 1/100 - 1/300. ELISA: 1/10000. Not yet tested in other applications. |
| Immunogen | The antiserum was produced against synthesized peptide derived from human GLUT3. AA range:447-496 |
| Specificity | Glut3 Polyclonal Antibody detects endogenous levels of Glut3 protein. |
| Formulation | Liquid in PBS containing 50% glycerol, 0.5% BSA and 0.02% sodium azide. |
| Storage | Store at -20°C. Avoid repeated freeze-thaw cycles. |
| Protein Name | Solute carrier family 2 facilitated glucose transporter member 3 |
| Gene Name | SLC2A3 |
| Cellular localization | Cell membrane ; Multi-pass membrane protein . Perikaryon . Cell projection . Localized to densely spaced patches along neuronal processes. . |
| Purification | The antibody was affinity-purified from rabbit antiserum by affinity-chromatography using epitope-specific immunogen. |
| Clonality | Polyclonal |
| Concentration | 1 mg/ml |
| Observed band | 55kD |
| Human Gene ID | 6515 |
| Human Swiss-Prot Number | P11169 |
| Alternative Names | SLC2A3; GLUT3; Solute carrier family 2; facilitated glucose transporter member 3; Glucose transporter type 3, brain; GLUT-3 |
| Background | function:Facilitative glucose transporter. Probably a |

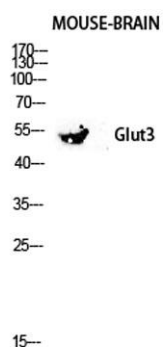




neuronal glucose transporter.,similarity:Belongs to the major facilitator superfamily. Sugar transporter (TC 2.A.1.1) family. Glucose transporter subfamily.,tissue specificity:Highly expressed in brain. Expressed in many tissues.,

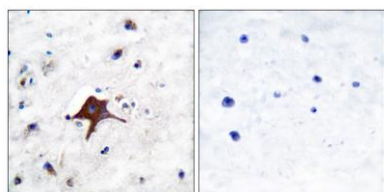


Western Blot analysis of SH-SY5Y cells using Glut3 Polyclonal Antibody diluted at 1:2000



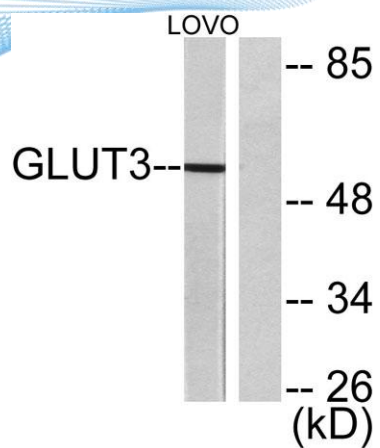
Western blot analysis of Mouse-kidney lysis using Glut3 antibody. Antibody was diluted at 1:2000

Immunohistochemistry analysis of paraffin-embedded human brain tissue, using GLUT3 Antibody. The picture on the right is blocked with the synthesized peptide.





ELK Biotechnology



Western blot analysis of lysates from LOVO cells, using GLUT3 Antibody. The lane on the right is blocked with the synthesized peptide.



+86-27-59760950

ELKbio@ELKbiotech.com

www.elkbiotech.com

23-2, No.388 Gaoxin 2nd Road, Wuhan East Lake Hi-tech Development Zone, Hubei, P.R.C