



TUTase rabbit pAb

Cat No.:ES7201

For research use only

Overview

Product Name	TUTase rabbit pAb
Host species	Rabbit
Applications	WB;IHC;IF;ELISA
Species Cross-Reactivity	Human;Rat;Mouse;
Recommended dilutions	Western Blot: 1/500 - 1/2000. Immunohistochemistry: 1/100 - 1/300. ELISA: 1/20000. Not yet tested in other applications.
Immunogen	The antiserum was produced against synthesized peptide derived from human TUT1. AA range:291-340
Specificity	TUTase Polyclonal Antibody detects endogenous levels of TUTase protein.
Formulation	Liquid in PBS containing 50% glycerol, 0.5% BSA and 0.02% sodium azide.
Storage	Store at -20°C. Avoid repeated freeze-thaw cycles.
Protein Name	Speckle targeted PIP5K1A-regulated poly(A) polymerase
Gene Name	TUT1
Cellular localization	Nucleus, nucleolus . Nucleus speckle .
Purification	The antibody was affinity-purified from rabbit antiserum by affinity-chromatography using epitope-specific immunogen.
Clonality	Polyclonal
Concentration	1 mg/ml
Observed band	95kD
Human Gene ID	64852
Human Swiss-Prot Number	Q9H6E5
Alternative Names	TUT1; RBM21; Speckle targeted PIP5K1A-regulated poly(A) polymerase; Star-PAP; RNA-binding motif protein 21; RNA-binding protein 21; U6 snRNA-specific terminal uridylyltransferase 1; U6-TUTase
Background	This gene encodes a nucleotidyl transferase that

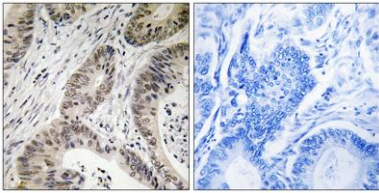




ELK Biotechnology

functions as both a terminal uridylyltransferase and a nuclear poly(A) polymerase. The encoded enzyme specifically adds and removes nucleotides from the 3' end of small nuclear RNAs and select mRNAs and may function in controlling gene expression and cell proliferation.[provided by RefSeq, Apr 2009],

Immunohistochemistry analysis of paraffin-embedded human colon carcinoma, using TUT1 Antibody. The picture on the right is blocked with the synthesized peptide.



+86-27-59760950

ELKbio@ELKbiotech.com

www.elkbiotech.com

23-2, No.388 Gaoxin 2nd Road,Wuhan East Lake Hi-tech Development Zone, Hubei , P.R.C