



# SH3BGR rabbit pAb

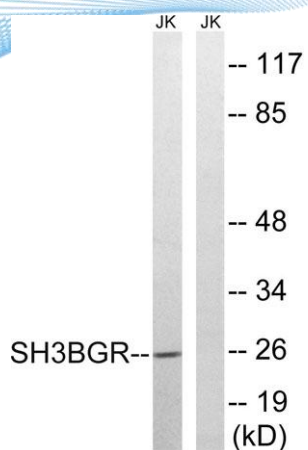
Cat No.:ES7183

For research use only

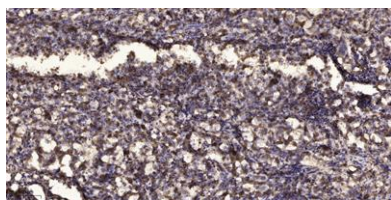
## Overview

<b>Product Name</b>	SH3BGR rabbit pAb
<b>Host species</b>	Rabbit
<b>Applications</b>	WB;IHC
<b>Species Cross-Reactivity</b>	Human;Mouse;Rat
<b>Recommended dilutions</b>	WB 1:500-2000;IHC-p 1:50-300
<b>Immunogen</b>	The antiserum was produced against synthesized peptide derived from human SH3BGR. AA range:81-130
<b>Specificity</b>	SH3BGR Polyclonal Antibody detects endogenous levels of SH3BGR protein.
<b>Formulation</b>	Liquid in PBS containing 50% glycerol, 0.5% BSA and 0.02% sodium azide.
<b>Storage</b>	Store at -20°C. Avoid repeated freeze-thaw cycles.
<b>Protein Name</b>	SH3 domain-binding glutamic acid-rich protein
<b>Gene Name</b>	SH3BGR
<b>Cellular localization</b>	cytosol,
<b>Purification</b>	The antibody was affinity-purified from rabbit antiserum by affinity-chromatography using epitope-specific immunogen.
<b>Clonality</b>	Polyclonal
<b>Concentration</b>	1 mg/ml
<b>Observed band</b>	26kD
<b>Human Gene ID</b>	6450
<b>Human Swiss-Prot Number</b>	P55822
<b>Alternative Names</b>	SH3BGR; SH3 domain-binding glutamic acid-rich protein; SH3BGR protein; 21-glutamic acid-rich protein; 21-GARP
<b>Background</b>	caution:It is uncertain whether Met-1 or Met-64 is the initiator.,similarity:Belongs to the SH3BGR family.,tissue specificity:Expressed in heart and skeletal muscle.,





Western blot analysis of lysates from Jurkat cells, using SH3BGR Antibody. The lane on the right is blocked with the synthesized peptide.



Immunohistochemical analysis of paraffin-embedded human Squamous cell carcinoma of lung. 1, Antibody was diluted at 1:200(4° overnight). 2, Tris-EDTA,pH9.0 was used for antigen retrieval. 3,Secondary antibody was diluted at 1:200(room temperature, 45min).

