



Dynein IC2 rabbit pAb

Cat No.:ES7177

For research use only

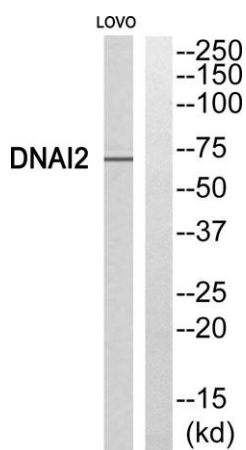
Overview

Product Name	Dynein IC2 rabbit pAb
Host species	Rabbit
Applications	WB;ELISA
Species Cross-Reactivity	Human;Mouse;Rat;Chicken
Recommended dilutions	Western Blot: 1/500 - 1/2000. ELISA: 1/10000. Not yet tested in other applications.
Immunogen	The antiserum was produced against synthesized peptide derived from human DNAI2. AA range:71-120
Specificity	Dynein IC2 Polyclonal Antibody detects endogenous levels of Dynein IC2 protein.
Formulation	Liquid in PBS containing 50% glycerol, 0.5% BSA and 0.02% sodium azide.
Storage	Store at -20°C. Avoid repeated freeze-thaw cycles.
Protein Name	Dynein intermediate chain 2 axonemal
Gene Name	DNAI2
Cellular localization	Cytoplasm, cytoskeleton, cilium axoneme . Dynein axonemal particle . Located in the proximal region of respiratory cilia. .
Purification	The antibody was affinity-purified from rabbit antiserum by affinity-chromatography using epitope-specific immunogen.
Clonality	Polyclonal
Concentration	1 mg/ml
Observed band	70kD
Human Gene ID	64446
Human Swiss-Prot Number	Q9GZS0
Alternative Names	DNAI2; Dynein intermediate chain 2; axonemal; Axonemal dynein intermediate chain 2
Background	The protein encoded by this gene belongs to the dynein intermediate chain family, and is part of the dynein complex of respiratory cilia and sperm flagella. Mutations in this gene are associated with

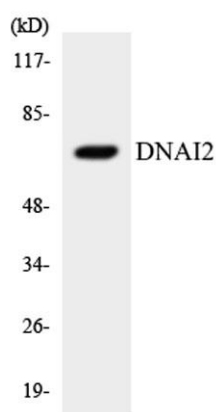




primary ciliary dyskinesia type 9. Alternatively spliced transcript variants encoding different isoforms have been noted for this gene. [provided by RefSeq, Mar 2010],



Western blot analysis of DNAI2 Antibody. The lane on the right is blocked with the DNAI2 peptide.



Western blot analysis of the lysates from RAW264.7 cells using DNAI2 antibody.

