



# GCNT6 rabbit pAb

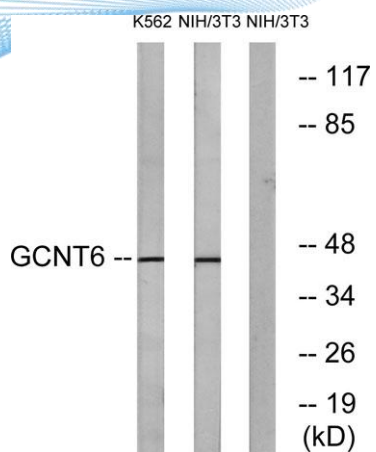
Cat No.:ES7176

For research use only

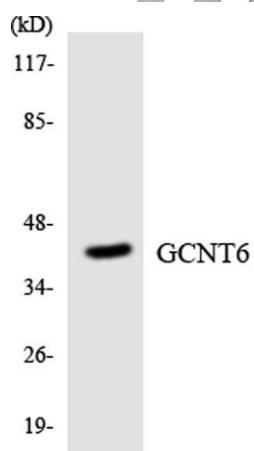
## Overview

<b>Product Name</b>	GCNT6 rabbit pAb
<b>Host species</b>	Rabbit
<b>Applications</b>	WB;IF;ELISA
<b>Species Cross-Reactivity</b>	Human;Rat;Mouse;
<b>Recommended dilutions</b>	Western Blot: 1/500 - 1/2000. Immunofluorescence: 1/200 - 1/1000. ELISA: 1/40000. Not yet tested in other applications.
<b>Immunogen</b>	The antiserum was produced against synthesized peptide derived from human GCNT6. AA range:201-250
<b>Specificity</b>	GCNT6 Polyclonal Antibody detects endogenous levels of GCNT6 protein.
<b>Formulation</b>	Liquid in PBS containing 50% glycerol, 0.5% BSA and 0.02% sodium azide.
<b>Storage</b>	Store at -20°C. Avoid repeated freeze-thaw cycles.
<b>Protein Name</b>	Beta-1,3-galactosyl-O-glycosyl-glycoprotein beta-1,6-N-acetylglucosaminyltransferase 6
<b>Gene Name</b>	GCNT6
<b>Cellular localization</b>	Golgi membrane,integral component of membrane,
<b>Purification</b>	The antibody was affinity-purified from rabbit antiserum by affinity-chromatography using epitope-specific immunogen.
<b>Clonality</b>	Polyclonal
<b>Concentration</b>	1 mg/ml
<b>Observed band</b>	45kD
<b>Human Gene ID</b>	644378
<b>Human Swiss-Prot Number</b>	Q5T4J0
<b>Alternative Names</b>	GCNT6; Beta-1; 3-galactosyl-O-glycosyl-glycoprotein beta-1,6-N-acetylglucosaminyltransferase 6
<b>Background</b>	function:Glycosyltransferase.,pathway:Protein modification; protein glycosylation.,similarity:Belongs to the glycosyltransferase 14 family.,





Western blot analysis of lysates from NIH/3T3 and K562 cells, using GCNT6 Antibody. The lane on the right is blocked with the synthesized peptide.



Western blot analysis of the lysates from HeLa cells using GCNT6 antibody.

