



# Cadherin-24 rabbit pAb

Cat No.:ES7169

For research use only

## Overview

<b>Product Name</b>	Cadherin-24 rabbit pAb
<b>Host species</b>	Rabbit
<b>Applications</b>	IF;WB;ELISA
<b>Species Cross-Reactivity</b>	Human;Mouse
<b>Recommended dilutions</b>	WB 1:500-2000 Immunofluorescence: 1/200 - 1/1000. ELISA: 1/10000. Not yet tested in other applications.
<b>Immunogen</b>	The antiserum was produced against synthesized peptide derived from human CDH24. AA range:81-130
<b>Specificity</b>	Cadherin-24 Polyclonal Antibody detects endogenous levels of Cadherin-24 protein.
<b>Formulation</b>	Liquid in PBS containing 50% glycerol, 0.5% BSA and 0.02% sodium azide.
<b>Storage</b>	Store at -20°C. Avoid repeated freeze-thaw cycles.
<b>Protein Name</b>	Cadherin-24
<b>Gene Name</b>	CDH24
<b>Cellular localization</b>	Cell membrane ; Single-pass type I membrane protein .
<b>Purification</b>	The antibody was affinity-purified from rabbit antiserum by affinity-chromatography using epitope-specific immunogen.
<b>Clonality</b>	Polyclonal
<b>Concentration</b>	1 mg/ml
<b>Observed band</b>	
<b>Human Gene ID</b>	64403
<b>Human Swiss-Prot Number</b>	Q86UP0
<b>Alternative Names</b>	CDH24; CDH11L; Cadherin-24
<b>Background</b>	function:Cadherins are calcium dependent cell adhesion proteins.,function:Cadherins are calcium dependent cell adhesion proteins. They preferentially interact with themselves in a homophilic manner in connecting cells; cadherins

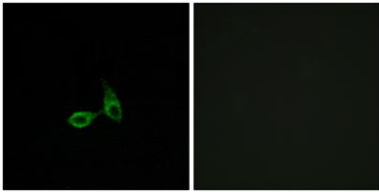




**ELK Biotechnology**

may thus contribute to the sorting of heterogeneous cell types. Cadherin-24 mediate strong cell-cell adhesion.,similarity:Contains 5 cadherin domains.,subunit:Associates with alpha-, beta- and delta-catenins.,

Immunofluorescence analysis of HepG2 cells, using CDH24 Antibody. The picture on the right is blocked with the synthesized peptide.



+86-27-59760950

[ELKbio@ELKbiotech.com](mailto:ELKbio@ELKbiotech.com)

[www.elkbiotech.com](http://www.elkbiotech.com)

23-2, No.388 Gaoxin 2nd Road,Wuhan East Lake Hi-tech Development Zone, Hubei , P.R.C