



SRp55 rabbit pAb

Cat No.:ES7159

For research use only

Overview

Product Name	SRp55 rabbit pAb
Host species	Rabbit
Applications	IHC;IF;ELISA
Species Cross-Reactivity	Human;Mouse;Rat
Recommended dilutions	Immunohistochemistry: 1/100 - 1/300. ELISA: 1/20000. Not yet tested in other applications.
Immunogen	Synthesized peptide derived from SRp55 . at AA range: 30-110
Specificity	SRp55 Polyclonal Antibody detects endogenous levels of SRp55 protein.
Formulation	Liquid in PBS containing 50% glycerol, 0.5% BSA and 0.02% sodium azide.
Storage	Store at -20°C. Avoid repeated freeze-thaw cycles.
Protein Name	Serine/arginine-rich splicing factor 6
Gene Name	SRSF6
Cellular localization	Nucleus . Nucleus speckle .
Purification	The antibody was affinity-purified from rabbit antiserum by affinity-chromatography using epitope-specific immunogen.
Clonality	Polyclonal
Concentration	1 mg/ml
Observed band	
Human Gene ID	6431
Human Swiss-Prot Number	Q13247
Alternative Names	SRSF6; SFRS6; SRP55; Serine/arginine-rich splicing factor 6; Pre-mRNA-splicing factor SRP55; Splicing factor; arginine/serine-rich 6
Background	The protein encoded by this gene is involved in mRNA splicing and may play a role in the determination of alternative splicing. The encoded nuclear protein belongs to the splicing factor SR family and has been shown to bind with and modulate another member of the family, SFRS12.

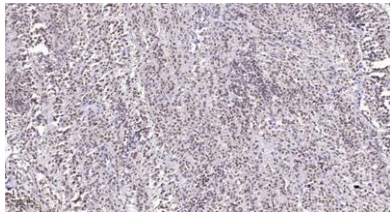




ELK Biotechnology

Alternative splicing results in multiple transcript variants. In addition, two pseudogenes, one on chromosome 17 and the other on the X chromosome, have been found for this gene.[provided by RefSeq, Sep 2010],

Immunohistochemical analysis of paraffin-embedded human Small intestinal stromal tumor. 1, Tris-EDTA,pH9.0 was used for antigen retrieval. 2 Antibody was diluted at 1:200(4° overnight).3,Secondary antibody was diluted at 1:200(room temperature, 45min).



+86-27-59760950

ELKbio@ELKbiotech.com

www.elkbiotech.com

23-2, No.388 Gaoxin 2nd Road,Wuhan East Lake Hi-tech Development Zone, Hubei , P.R.C