



hCAP-G rabbit pAb

Cat No.:ES7153

For research use only

Overview

Product Name	hCAP-G rabbit pAb
Host species	Rabbit
Applications	WB;ELISA
Species Cross-Reactivity	Human;Rat;Mouse;
Recommended dilutions	Western Blot: 1/500 - 1/2000. ELISA: 1/40000. Not yet tested in other applications.
Immunogen	The antiserum was produced against synthesized peptide derived from human NCAPG. AA range:951-1000
Specificity	hCAP-G Polyclonal Antibody detects endogenous levels of hCAP-G protein.
Formulation	Liquid in PBS containing 50% glycerol, 0.5% BSA and 0.02% sodium azide.
Storage	Store at -20°C. Avoid repeated freeze-thaw cycles.
Protein Name	Condensin complex subunit 3
Gene Name	NCAPG
Cellular localization	Nucleus. Cytoplasm. Chromosome. In interphase cells, the majority of the condensin complex is found in the cytoplasm, while a minority of the complex is associated with chromatin. A subpopulation of the complex however remains associated with chromosome f
Purification	The antibody was affinity-purified from rabbit antiserum by affinity-chromatography using epitope-specific immunogen.
Clonality	Polyclonal
Concentration	1 mg/ml
Observed band	115kD
Human Gene ID	64151
Human Swiss-Prot Number	Q9BPX3
Alternative Names	NCAPG; CAPG; NYMEL3; Condensin complex subunit 3; Chromosome-associated protein G; Condensin subunit CAP-G; hCAP-G; Melanoma antigen

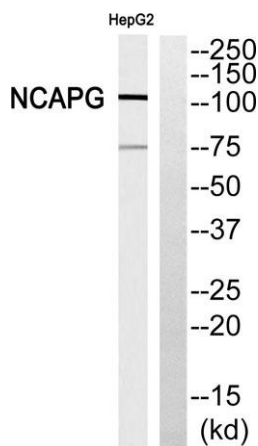




Background

NY-MEL-3; Non-SMC condensin I complex subunit G;
XCAP-G homolog

This gene encodes a subunit of the condensin complex, which is responsible for the condensation and stabilization of chromosomes during mitosis and meiosis. Phosphorylation of the encoded protein activates the condensin complex. There are pseudogenes for this gene on chromosomes 8 and 15. Alternative splicing results in multiple transcript variants. [provided by RefSeq, Aug 2012],



Western blot analysis of NCAPG Antibody. The lane on the right is blocked with the NCAPG peptide.

