



CIDE-3 rabbit pAb

Cat No.:ES7141

For research use only

Overview

Product Name	CIDE-3 rabbit pAb
Host species	Rabbit
Applications	IHC;IF;ELISA
Species Cross-Reactivity	Human;Rat;Mouse;
Recommended dilutions	Immunohistochemistry: 1/100 - 1/300. Immunofluorescence: 1/200 - 1/1000. ELISA: 1/5000. Not yet tested in other applications.
Immunogen	The antiserum was produced against synthesized peptide derived from human CIDEc. AA range:189-238
Specificity	CIDE-3 Polyclonal Antibody detects endogenous levels of CIDE-3 protein.
Formulation	Liquid in PBS containing 50% glycerol, 0.5% BSA and 0.02% sodium azide.
Storage	Store at -20°C. Avoid repeated freeze-thaw cycles.
Protein Name	Cell death activator CIDE-3
Gene Name	CIDEc
Cellular localization	Nucleus . Endoplasmic reticulum. Lipid droplet. Diffuses quickly on lipid droplet surface, but becomes trapped and clustered at lipid droplet contact sites, thereby enabling its rapid enrichment at lipid droplet contact sites.
Purification	The antibody was affinity-purified from rabbit antiserum by affinity-chromatography using epitope-specific immunogen.
Clonality	Polyclonal
Concentration	1 mg/ml
Observed band	
Human Gene ID	63924
Human Swiss-Prot Number	Q96AQ7
Alternative Names	CIDEc; FSP27; Cell death activator CIDE-3; Cell death-inducing DFFA-like effector protein C; Fat-specific protein FSP27 homolog

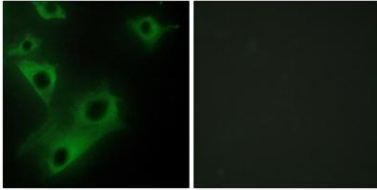




Background

cell death inducing DFFA like effector c(CIDEc) Homo sapiens This gene encodes a member of the cell death-inducing DNA fragmentation factor-like effector family. Members of this family play important roles in apoptosis. The encoded protein promotes lipid droplet formation in adipocytes and may mediate adipocyte apoptosis. This gene is regulated by insulin and its expression is positively correlated with insulin sensitivity. Mutations in this gene may contribute to insulin resistant diabetes. A pseudogene of this gene is located on the short arm of chromosome 3. Alternatively spliced transcript variants that encode different isoforms have been observed for this gene. [provided by RefSeq, Dec 2010],

Immunofluorescence analysis of HeLa cells, using CIDEc Antibody. The picture on the right is blocked with the synthesized peptide.



Immunohistochemistry analysis of paraffin-embedded human colon carcinoma tissue, using CIDEc Antibody. The picture on the right is blocked with the synthesized peptide.

