



SH2D4A rabbit pAb

Cat No.:ES7140

For research use only

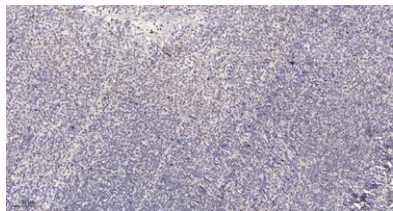
Overview

Product Name	SH2D4A rabbit pAb
Host species	Rabbit
Applications	IHC;IF;ELISA
Species Cross-Reactivity	Human;Rat;Mouse;
Recommended dilutions	Immunohistochemistry: 1/100 - 1/300. ELISA: 1/20000. Not yet tested in other applications.
Immunogen	The antiserum was produced against synthesized peptide derived from human SH2D4A. AA range:180-220
Specificity	SH2D4A Polyclonal Antibody detects endogenous levels of SH2D4A protein.
Formulation	Liquid in PBS containing 50% glycerol, 0.5% BSA and 0.02% sodium azide.
Storage	Store at -20°C. Avoid repeated freeze-thaw cycles.
Protein Name	SH2 domain-containing protein 4A
Gene Name	SH2D4A
Cellular localization	Cytoplasm . Located at podocyte foot processes. .
Purification	The antibody was affinity-purified from rabbit antiserum by affinity-chromatography using epitope-specific immunogen.
Clonality	Polyclonal
Concentration	1 mg/ml
Observed band	
Human Gene ID	63898
Human Swiss-Prot Number	Q9H788
Alternative Names	SH2D4A; SH2A; SH2 domain-containing protein 4A; Protein SH(2)A
Background	sequence caution:Translated as stop.,sequence caution:Translation N-terminally extended.,similarity:Contains 1 SH2 domain.,tissue specificity:Ubiquitously expressed. Aberrantly expressed in some cancers.,





ELK Biotechnology



Immunohistochemical analysis of paraffin-embedded human tonsil. 1, Antibody was diluted at 1:200(4° overnight). 2, Tris-EDTA,pH9.0 was used for antigen retrieval. 3,Secondary antibody was diluted at 1:200(room temperature, 30min).



+86-27-59760950

ELKbio@ELKbiotech.com

www.elkbiotech.com

23-2, No.388 Gaoxin 2nd Road,Wuhan East Lake Hi-tech Development Zone, Hubei , P.R.C