



# SAA4 rabbit pAb

Cat No.:ES7118

For research use only

## Overview

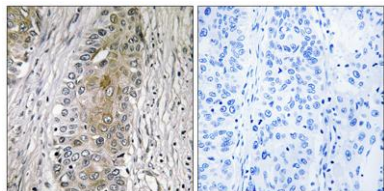
<b>Product Name</b>	SAA4 rabbit pAb
<b>Host species</b>	Rabbit
<b>Applications</b>	IHC;IF;ELISA
<b>Species Cross-Reactivity</b>	Human;Rat;Mouse;
<b>Recommended dilutions</b>	Immunohistochemistry: 1/100 - 1/300. ELISA: 1/40000. Not yet tested in other applications.
<b>Immunogen</b>	The antiserum was produced against synthesized peptide derived from human SAA4. AA range:81-130
<b>Specificity</b>	SAA4 Polyclonal Antibody detects endogenous levels of SAA4 protein.
<b>Formulation</b>	Liquid in PBS containing 50% glycerol, 0.5% BSA and 0.02% sodium azide.
<b>Storage</b>	Store at -20°C. Avoid repeated freeze-thaw cycles.
<b>Protein Name</b>	Serum amyloid A-4 protein
<b>Gene Name</b>	SAA4
<b>Cellular localization</b>	Secreted .
<b>Purification</b>	The antibody was affinity-purified from rabbit antiserum by affinity-chromatography using epitope-specific immunogen.
<b>Clonality</b>	Polyclonal
<b>Concentration</b>	1 mg/ml
<b>Observed band</b>	
<b>Human Gene ID</b>	6291
<b>Human Swiss-Prot Number</b>	P35542
<b>Alternative Names</b>	SAA4; CSAA; Serum amyloid A-4 protein; Constitutively expressed serum amyloid A protein; C-SAA
<b>Background</b>	function:Major acute phase reactant. Apolipoprotein of the HDL complex.,induction:Constitutively expressed.,similarity:Belongs to the SAA family.,tissue specificity:Expressed by the liver; secreted in plasma.,





**ELK Biotechnology**

Immunohistochemistry analysis of paraffin-embedded human lung carcinoma, using SAA4 Antibody. The picture on the right is blocked with the synthesized peptide.



+86-27-59760950

[ELKbio@ELKbiotech.com](mailto:ELKbio@ELKbiotech.com)

[www.elkbiotech.com](http://www.elkbiotech.com)

23-2, No.388 Gaoxin 2nd Road, Wuhan East Lake Hi-tech Development Zone, Hubei, P.R.C